

APPROVED BY PLANNING

TITLE: Planner
DATE: 01/11/2023



APPROVED BY FORESTRY

TITLE: Landscape Arborist
DATE: 01/11/2023



LEGAL DESCRIPTION:
LOT 1, BLOCK 4,
SLOVEN SECOND SUB.
Lot Area: 79,115 SF

ZONING:
MA - LIGHT INDUSTRIAL

SETBACKS:
FRONT: 15'
SIDE: 0'
REAR: 10'

OWNER:
DnS PROPERTIES, LLP
PO BOX 6122
BISMARCK, ND

STREET TREES

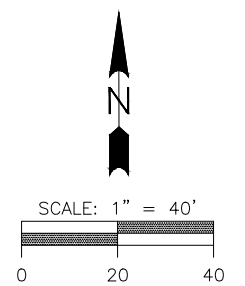
BURLINGTON DRIVE: 240 TOTAL FEET @ $\frac{37 \text{ TREES}}{100 \text{ FEET}} = 7 \text{ TREES}$
VERMONT AVENUE: 330 TOTAL FEET @ $\frac{37 \text{ TREES}}{100 \text{ FEET}} = 10 \text{ TREES}$
STREET TREES PROVIDED: 7 TREES (10 FUTURE TREES) (VARIANCE REQUEST FOR VERMONT AVENUE STREET TREES)

PERIMETER PARKING LOT LANDSCAPING

BURLINGTON DRIVE: 50 LF @ $\frac{1 \text{ TREE} + 5 \text{ SHRUBS}}{25 \text{ FEET}} = 2 \text{ TREES} + 10 \text{ SHRUBS}$
VERMONT AVENUE: 49 LF @ $\frac{1 \text{ TREE} + 5 \text{ SHRUBS}}{25 \text{ FEET}} = 2 \text{ TREES} + 10 \text{ SHRUBS}$
REQUIRED: = 4 TREES & 20 SHRUBS
PROVIDED: = 4 TREES & 20 SHRUBS

INTERIOR PARKING LOT LANDSCAPING

GREEN SPACE REQUIRED: 77 PARKING STALLS @ $\frac{10 \text{ SF}}{\text{STALL}} = 770 \text{ SF}$
LANDSCAPE REQUIRED: 77 PARKING @ $\frac{10 \text{ SF}}{\text{STALL}} + 3 \text{ SHRUBS}$
REQUIRED: 770 SF GREEN SPACE, 4 TREES, & 12 SHRUBS
PROVIDED: 985 SF GREEN SPACE, 4 TREES & 14 SHRUBS



SURVEY INFO: VERT. DATUM: NAVD88
HORIZ DATUM: 1983 STATE PLANE, ND SOUTH (3302)

LEGEND

- SHRUBS / PERENIALS:
- LITTLE GIANT GLOBE
H=3-4', S=3-4'
Thuja occidentalis 'Little Giant'
SIZE=2 GAL, PHASE 1 QUANTITY= 7
FUTURE PHASE = 5
 - DWARF GLOBE BLUE SPRUCE
H=3-5', S=4-6'
Picea pungens 'Globosa'
SIZE=2 GAL, PHASE 1 QUANTITY= 5
FUTURE PHASE = 3
 - MOPS MUGO PINE
H=3-4', S=3-4'
Pinus mugo 'Mops'
SIZE=2 GAL, PHASE 1 QUANTITY= 8
FUTURE PHASE = 6
 - LITTLELEAF LINDEN
H=35', S=30'
Tilia cordata
SIZE=1" CALIPER, PHASE 1 QUANTITY= 8
FUTURE PHASE = 1
 - AMUR MAPLE
H=15'-20', S=25'
Acer ginnala
SIZE=1" CALIPER, PHASE 1 QUANTITY= 4
FUTURE PHASE = 2
 - PERMANENT GREEN AREA

THIS DOCUMENT WAS ORIGINALLY
ISSUED AND SEALED ON 9/6/2022
BY ABRAHAM E. ULMER
REGISTRATION NO. 6693
ORIGINAL DOCUMENT IS STORED ON FILE AT
ILSE INC.

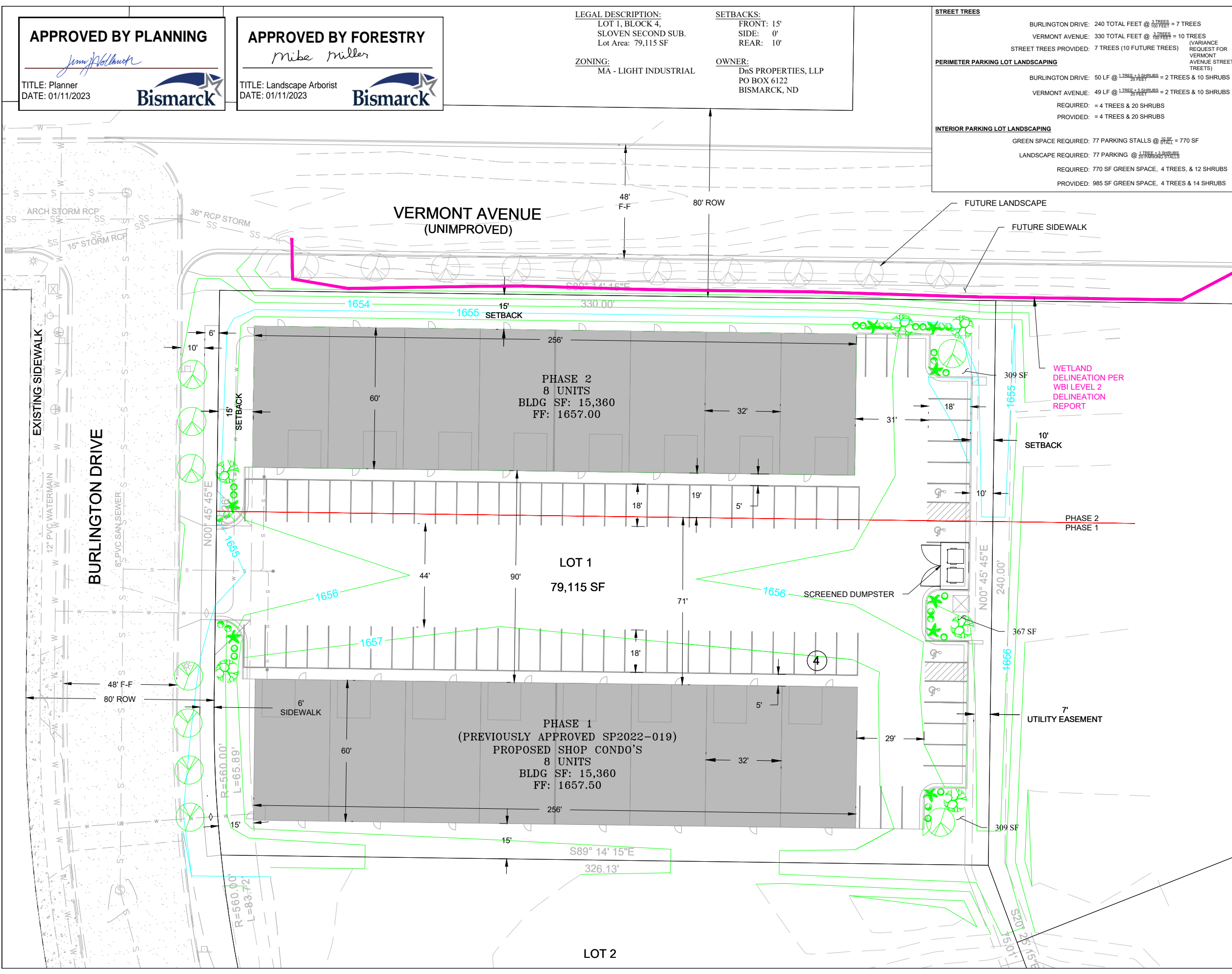
CAUTION
CONTRACTOR IS RESPONSIBLE
FOR VERIFYING LOCATION OF ALL
UTILITIES PRIOR TO EXCAVATION

REVISED ON 9-06-22

Independent Land Surveying
& Engineering Inc.
4215 OLD RED TRAIL NW, Mandan, ND 58554
Phone: 701-663-5184 Cell: 701-220-0968 PROJ # 21165

DnS INVESTMENTS, LLP
SHOP CONDOS - PHASE 2 ADDITION
PROPOSED LANDSCAPING
813 BURLINGTON DRIVE
BISMARCK, NORTH DAKOTA
LOT 1, BLOCK 4, SLOVEN SECOND SUBDIVISION
SHEET 6 OF 6

SEPTEMBER, 2022



LOT 2