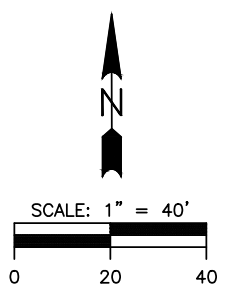
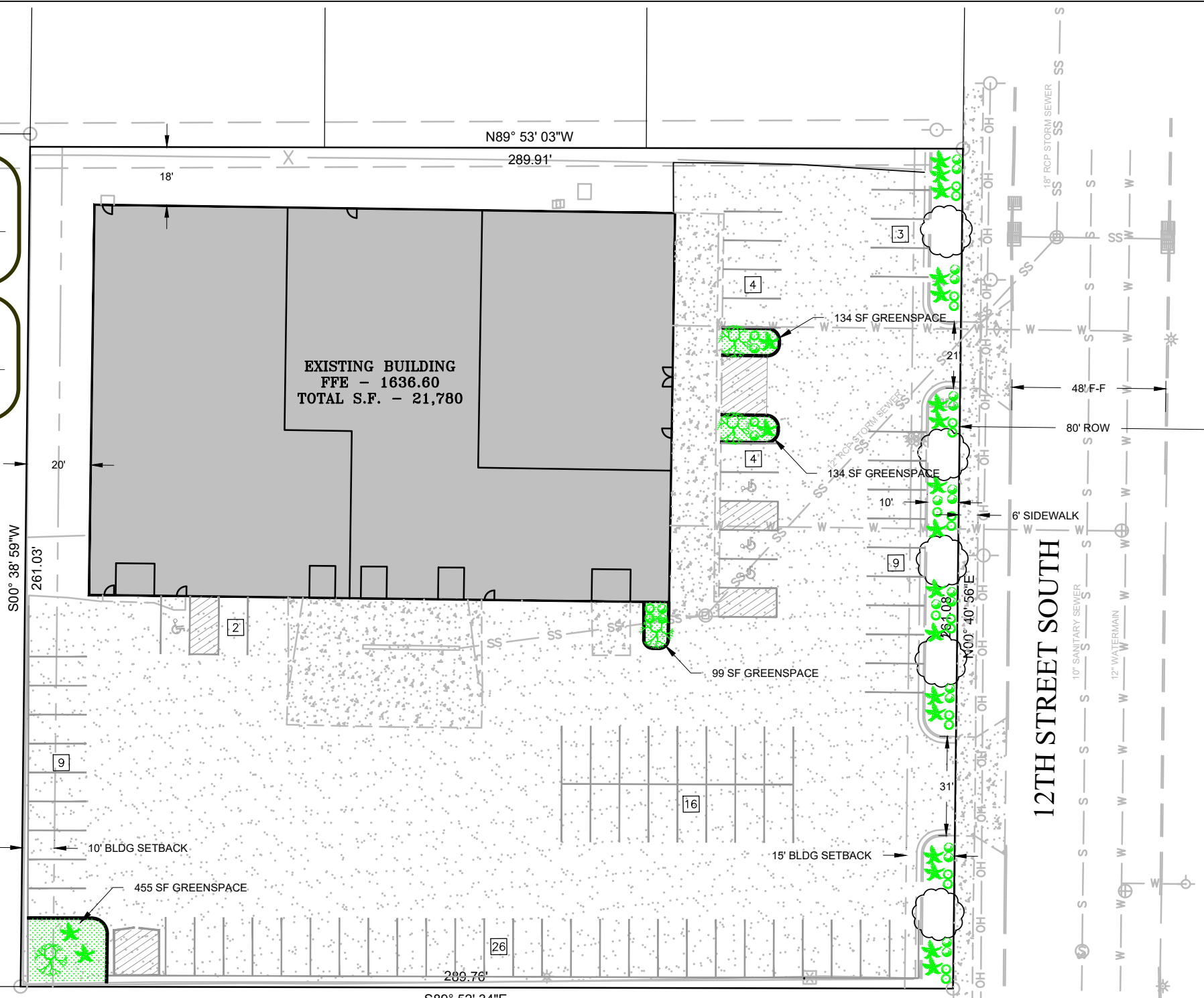


SP2021-065

APPROVED BY FORESTRY
Mike Miller
 TITLE: Landscape Arborist
 DATE: 03/10/2022
 Bismarck

APPROVED BY PLANNING
Wm. Henry
 TITLE: Planner
 DATE: 03/10/2022
 Bismarck



SURVEY INFO: VERT. DATUM: NAVD88
 HORIZ DATUM: 1983 STATE PLANE, ND SOUTH (3302)

LEGEND

- LITTLE GIANT GLOBE
 H=3-4', S=3-4'
 Thuja occidentalis 'Little Giant'
 SIZE=2 GAL, QUANTITY=22
- DWARF GLOBE BLUE SPRUCE
 H=3-5', S=4-6'
 Picea pungens 'Globosa'
 SIZE=2 GAL, QUANTITY=21
- MOPS MUGO PINE
 H=3-4', S=3-4'
 Pinus mugo 'Mops'
 SIZE=2 GAL, QUANTITY=22
- AMUR MAPLE
 H=15'-20', S=25'
 Acer ginnala
 SIZE=1" CALIPER, QUANTITY=4
- EXISTING TREES - GREEN ASH
 H=50', S=70'
 Fraxinus pennsylvanica
 QUANTITY=5

ZONING: MA

SETBACKS:
 FRONT: 15'
 SIDE: 0'
 REAR: 10'

CAUTION
 CONTRACTOR IS RESPONSIBLE FOR
 VERIFYING LOCATION OF ALL
 UTILITIES PRIOR TO EXCAVATION
 REVISED 3-2-22

| | |
|---|---|
| STREET TREES: | |
| 12TH STREET SOUTH | VARIANCE REQUEST DUE TO OVERHEAD POWER LINES |
| PERIMETER PARKING LOT LANDSCAPING: | |
| 12TH STREET SOUTH: | 261 LF @ $\frac{1 \text{ TREE} + 5 \text{ SHRUBS}}{25 \text{ LF}}$ = 11 TREES & 53 SHRUBS |
| REQUIRED: | 11 TREES & 53 SHRUBS |
| PROVIDED: | 5 EXISTING TREES & 53 SHRUBS |
| INTERIOR PARKING LOT LANDSCAPING: | |
| GREENSPACE REQUIRED: | 10 SF/ STALL x 73 STALLS = 730 SF |
| LANDSCAPE REQUIRED: | $\frac{1 \text{ TREE} + 3 \text{ SHRUBS}}{20 \text{ STALLS}}$ x 73 STALLS = 4 TREES & 12 SHRUBS |
| TOTAL PROVIDED: | 822 SF GREENSPACE & 4 TREES & 12 SHRUBS |

THIS DOCUMENT WAS ORIGINALLY
 ISSUED AND SEALED ON 3/2/2022
 BY ABRAHAM E. ULMER
 REGISTRATION NO. 6693
 ORIGINAL DOCUMENT IS STORED ON FILE AT
 ILSE INC.

**Independent Land Surveying
 & Engineering Inc.**
 4215 OLD RED TRAIL NW, Mandan, ND 58554
 Phone: 701-663-5184 Cell: 701-220-0968 PROJ # 21061

CENTURY BAPTIST CHURCH
 1112 S. 12TH STREET
 BISMARCK, NORTH DAKOTA

LOT 4, BLOCK 2, MAYFAIR MANAGERS ADDITION
 BISMARCK, NORTH DAKOTA

SHEET 4 OF 4 JULY, 2021

PROPOSED LANDSCAPE