

APPROVED BY FORESTRY
Mike Miller
TITLE: Landscape Arborist
DATE: 08/26/2021
Bismarck

APPROVED BY PLANNING
Wm. H. Harty
TITLE: Planner
DATE: 08/26/2021
Bismarck

PLANT SCHEDULE TAVERN

TREES (S.D. C15 ON SHT. L1.2)	CODE	BOTANICAL / COMMON NAME	SIZE	METHOD	QTY
	ALN HBN	Alnus hirsuta 'Harbin' TM Prairie Horizon Manchurian Alder	1.5" Cal.	Container	7
	QUE CRI	Quercus robur x alba 'Crim Schmidt' TM Crimson Spire Oak	1.5" Cal.	Container	15
	TIL COR	Tilia cordata Littelleaf Linden	1.5" Cal.	Container	3
SHRUBS (S.D. C10 ON SHT. L1.2)	CODE	BOTANICAL / COMMON NAME	SIZE	METHOD	QTY
	CLE HUM	Clethra alnifolia 'Hummingbird' Hummingbird Summersweet	2 gal.	Container	10
	COR B23	Cornus sericea 'Balladine' TM Firedance Red Twig Dogwood	2 gal.	Container	82
	POT FRU	Potentilla fruticosa Bush Cinquefoil	2 gal.	Container	16
PERENNIALS (S.D. C7 ON SHT. L1.2)	CODE	BOTANICAL / COMMON NAME	SIZE	METHOD	QTY
	CAL KAR	Calamagrostis x acutiflora 'Karl Foerster' Karl Foerster Feather Reed Grass	2 gal.	Container	73
	CIM RAM	Cimicifuga ramosa 'Hillside Black Beauty' Hillside Black Beauty Snakeroot	1 gal.	Container	17
GROUND COVERS	CODE	BOTANICAL / COMMON NAME	SIZE	METHOD	QTY
	ROCK	River Rock	--	--	3,745 sf
	SOD	Turf Sod	--	--	9,707 sf

LANDSCAPING NOTES

- AT THE TIME OF PLANTING, SHRUBS SHALL BE 24" MINIMUM ABOVE GRADE.
- ALL TREES SHALL HAVE A MINIMUM 3" RADIUS MULCH RING INSTALLED AT THE TIME OF PLANTING.
- CONTRACTOR SHALL PROVIDE A 1 YEAR WARRANTY ON ALL LANDSCAPE MATERIAL TO INCLUDE WORKMANSHIP FOR INSTALLATION FROM DATE OF FINAL ACCEPTANCE.
- CONTRACTOR TO ALLOW 5' CLEARANCE FROM UNDERGROUND UTILITY PIPING TO PLANTINGS.
- CONTRACTOR SHALL TAKE CAUTION DURING CONSTRUCTION AND ENSURE PROTECTION OF EXISTING TREES ALONG STATE STREET.

KEY NOTES

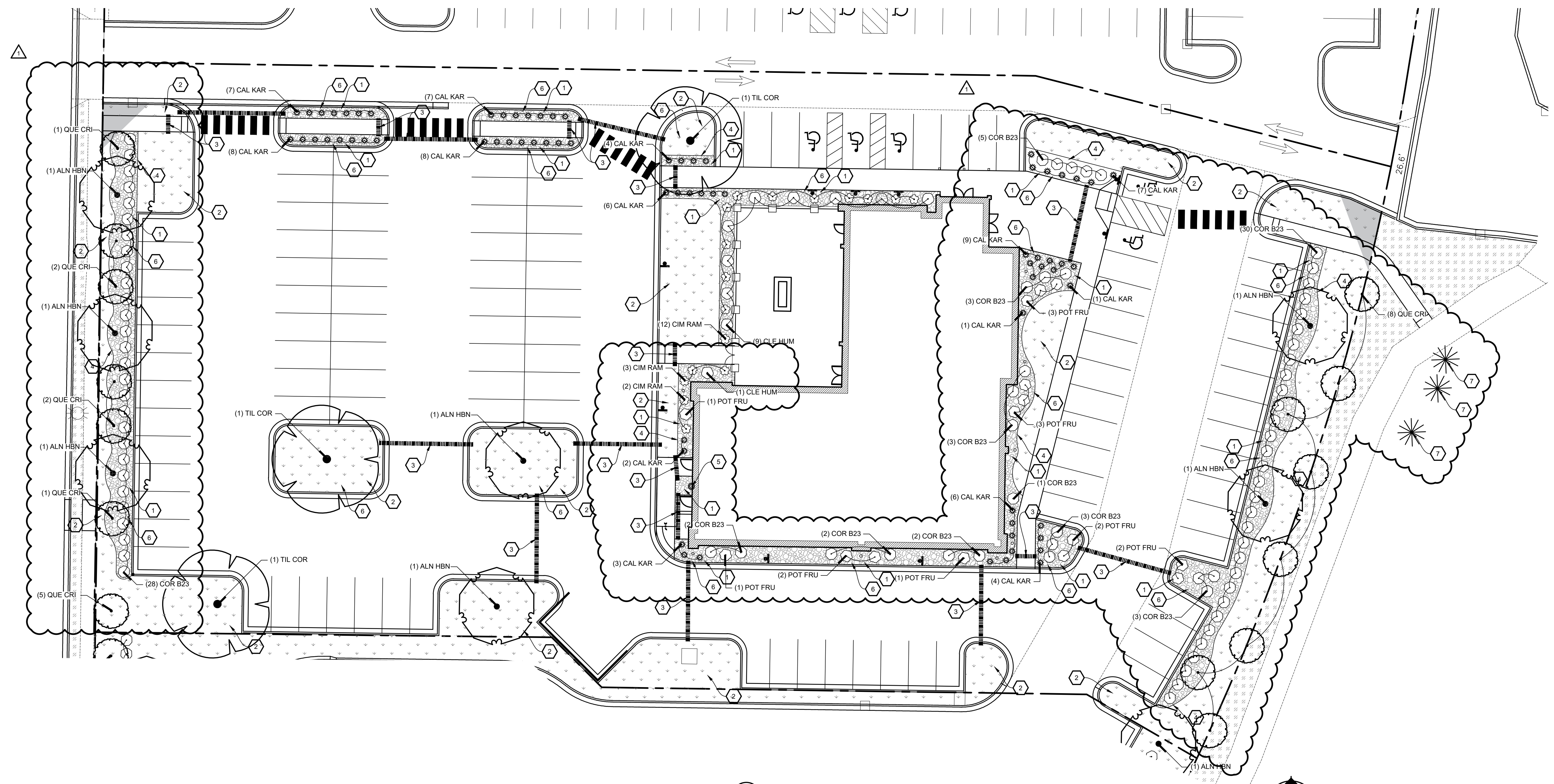
- 1 2" TO 5" ROCK OVER 2 LAYERS OF MIRAFI 500X OR APPROVED EQUAL FABRIC WEED BARRIER.
- 2 SOD.
- 3 4" PVC IRRIGATION PIPE SLEEVE COORDINATE W/ PAVING CONTRACTOR.
- 4 PROVIDE LANDSCAPING EDGING S.D. C4 ON SHT. L1.2.
- 5 PROVIDE 1.5" PRESSURE VACCUM BREAKER FOR IRRIGATION SYSTEM.
- 6 GRANULAR FILL AND GEOTEXTILE IN PLANTING BEDS REMOVED BY EARTHWORK CONTRACTOR (S.D. E15 ON SHT. L1.2).
- 7 EXISTING TREES TO REMOVE.

LEGEND

- PATCH EXISTING TURF AREAS
- 30' SIGHT TRIANGLE
- IRRIGATION SLEEVE

IRRIGATION NOTES

1. ALL ROCK PLANTING BEDS SHALL BE PROVIDED WITH DRIP IRRIGATION.
2. ALL SOD AREAS SHALL BE PROVIDED WITH A POP-UP IRRIGATION SYSTEM SPACED TO ADEQUATELY WATER ALL TURF AREAS INCLUDING BOULEVARD.



(K8) LANDSCAPE PLAN

SCALE: 1" = 20'
NORTH

DATE: JUNE 9, 2021
PROJECT NO: 20-023
DRAWN BY: LM
CHECKED BY: KM
ADDENDUMS:
REVISIONS:
1 REVISION 1 - 8/23/2021

THE TAVERN GRILL-BISMARCK
1802 NORTH 12TH STREET
Bismarck, North Dakota



CHRISTIANSON COMPANIES
PH. (701) 281-9500
FAX (701) 281-9501
4609 33RD AVE. S.
SUITE 400
FARGO, ND 58104

D&G DESIGN RESOURCES GROUP
PH. (701) 499-0212
FAX (701) 281-9501

SHEET DESCRIPTION:
LANDSCAPE PLAN

Sheet
L1.1