

APPROVED BY FORESTRY

Mike Miller

TITLE: Landscape Arborist
 DATE: 08/26/2021
 Bismarck

APPROVED BY PLANNING

Wm. Henry

TITLE: Planner
 DATE: 08/26/2021
 Bismarck

PLANT SCHEDULE TOMMY CAR WASH

TREES (S.D. C15 ON SHT. L1.3)	CODE	BOTANICAL / COMMON NAME	SIZE	METHOD	QTY
	*EX-ST	*Existing Street Tree N/A	--	--	3
	ALN HBN	Alnus hirsuta 'Harbin' TM Prairie Horizon Manchurian Alder	1.5" Cal.	Container	6
	QUE CRI	Quercus robur x alba 'Crimschmidt' TM Crimson Spire Oak	1.5" Cal.	Container	13
SHRUBS (S.D. C10 ON SHT. L1.3)	CODE	BOTANICAL / COMMON NAME	SIZE	METHOD	QTY
	COR B23	Cornus sericea 'Bailladeline' TM Firedance Red Twig Dogwood	2 gal.	Container	62
	POT FRU	Potentilla fruticosa Bush Cinquefoil	2 gal.	Container	4
PERENNIALS (S.D. C7 ON SHT. L1.3)	CODE	BOTANICAL / COMMON NAME	SIZE	METHOD	QTY
	CAL KAR	Calamagrostis x acutiflora 'Karl Foerster' Karl Foerster Feather Reed Grass	2 gal.	Container	8
GROUND COVERS	CODE	BOTANICAL / COMMON NAME	SIZE	METHOD	QTY
	ROCK	River Rock	--	--	2,718 sf
	SOD	Turf Sod	--	--	12,042 sf

LANDSCAPING NOTES

- AT THE TIME OF PLANTING, SHRUBS SHALL BE 24" MINIMUM ABOVE GRADE.
- ALL TREES SHALL HAVE A MINIMUM 3" RADIUS MULCH RING INSTALLED AT THE TIME OF PLANTING.
- CONTRACTOR SHALL PROVIDE A 1 YEAR WARRANTY ON ALL LANDSCAPE MATERIAL TO INCLUDE WORKMANSHIP FOR INSTALLATION FROM DATE OF FINAL ACCEPTANCE.
- CONTRACTOR TO ALLOW 5' CLEARANCE FROM UNDERGROUND UTILITY PIPING TO PLANTINGS.

KEY NOTES

- 2" TO 5" ROCK OVER 2 LAYERS OF MIRAFI 500X OR APPROVED EQUAL FABRIC WEED BARRIER.
- SOD.
- BEGIN/END SINGLE STRIP OF GEOFABRIC (3'-4" WIDE TYP.) UNDER HEDGE. ANCHOR DOWN WITH TYP. SOD STAPLES. COVER WITH AT LEAST 2" MULCH ON TOP.
- PROVIDE LANDSCAPING EDGING S.D. C4 ON SHT. L1.3.
- NOT USED.
- GRANULAR FILL AND GEOFABRIC IN PLANTING BEDS REMOVED BY EARTHWORK CONTRACTOR (S.D. E15 ON SHT. L1.3).
- EXISTING TREES TO REMOVE.

LEGEND

- PATCH EXISTING TURF AREAS
- 30' SIGHT TRIANGLE
- IRRIGATION SLEEVE

DATE: JUNE 9, 2021
 PROJECT NO: 20-011
 DRAWN BY: LM
 CHECKED BY: CRM
 ADDENDUMS:
 REVISIONS:

TOMMY'S EXPRESS CAR WASH
 1720 NORTH 12TH STREET
 Bismarck, North Dakota

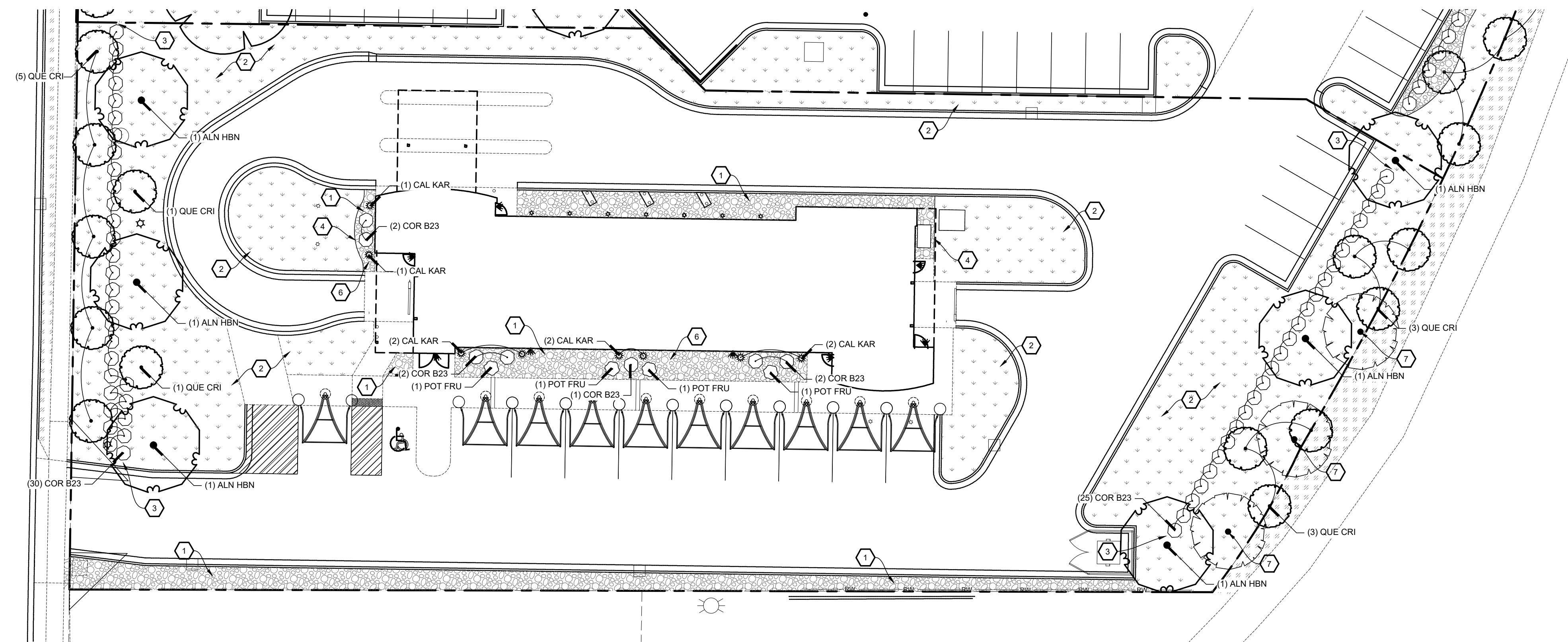


CHRISTIANSON COMPANIES
 PH. (701) 281-9500
 FAX (701) 281-9501
 4609 33RD AVE. S.
 SUITE 400
 FARGO, ND 58104

DRG
 DESIGN RESOURCES GROUP
 PH. (701) 499-0212
 FAX (701) 281-9501

SHEET DESCRIPTION:
 LANDSCAPE PLAN

Sheet
L1.1



(K8) LANDSCAPE PLAN

