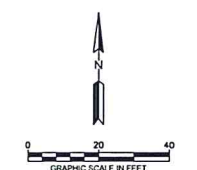
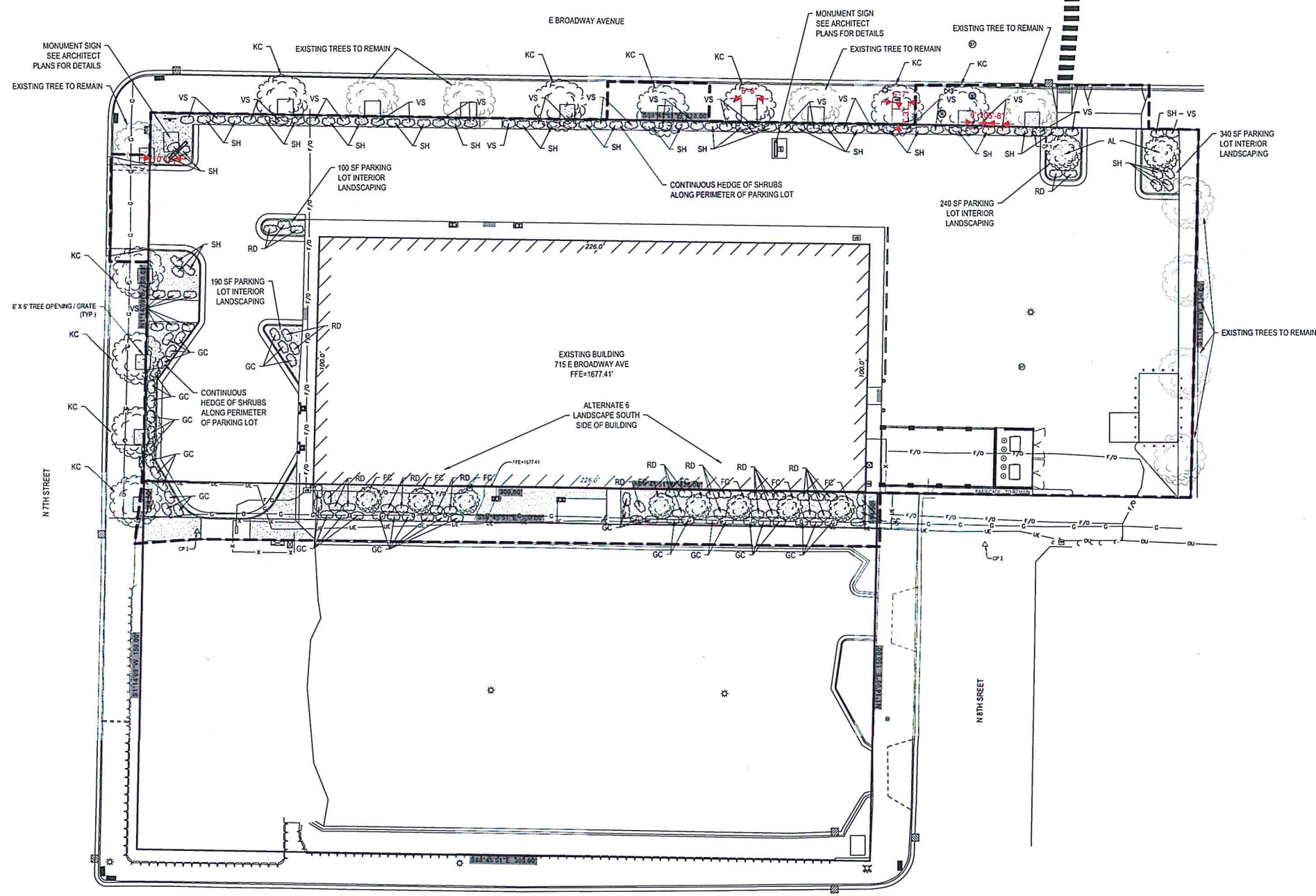


SP 2020-059



LANDSCAPE PLAN LEGEND

(Symbol)	SHRUB S.D. 1C500
(Symbol)	DECIDUOUS TREE S.D. 2C550
(Symbol)	CLASS II (SUNNY MIX) GRASS
(Symbol)	RIVER ROCK
(Symbol)	LANDSCAPE MULCH
(Symbol)	SITE CONSTRUCTION EXTENTS

GENERAL NOTES

- ALL HORIZONTAL MEASUREMENTS ARE IN NORTH DAKOTA STATE PLANE SOUTH ZONE, INTERNATIONAL FEET AND IN GRID DISTANCES. ALL ELEVATIONS SHOWN ARE IN NAVD83 DATUM.
- THE INFORMATION REPRESENTED IN THESE PLANS HAS BEEN COMPILED AND DESIGNED IN CONFORMANCE WITH THE INFORMATION AVAILABLE AND ESTABLISHED CIVIL ENGINEERING PRACTICES AT THE TIME THEY WERE ISSUED. NEITHER MOUNTAIN PLANS, LLC OR ITS PERSONNEL PROVIDE WARRANTY, EXPRESSED OR IMPLIED, FOR THE INFORMATION PRESENTED IN THE PLANS.
- THE USE OF "CONTRACTOR" APPLIES TO THE PARTY RESPONSIBLE FOR THE PORTION OF WORK BEING DESCRIBED.
- IT IS THE CONTRACTOR'S RESPONSIBILITY TO VERIFY ALL EXISTING UTILITY LOCATIONS AND ELEVATIONS. EXISTING UTILITY LOCATIONS SHOWN ARE APPROXIMATE. MOUNTAIN PLANS DOES NOT GUARANTEE THE EXACT LOCATIONS OF THE UTILITIES. THE CONTRACTOR IS REQUIRED TO CALL NORTH DAKOTA ONE CALL BY DIALING 811 OR 800-735-6555. THE CONTRACTOR IS RESPONSIBLE FOR ALL COSTS AND FEES ASSOCIATED WITH UTILITY LOCATES.
- CONTRACTOR SHALL OBTAIN PROPER PERMITS FROM THE CITY OR COUNTY WHEN WORKING WITHIN THE RIGHT-OF-WAY.
- THE COST OF MOBILIZATION IS TO BE INCLUDED IN THE PRICES BID FOR OTHER PROJECT TASKS AND SHALL INCLUDE ALL ITEMS NECESSARY FOR THE CONTRACTOR TO BE PRESENT ON SITE. THESE ITEMS INCLUDE, BUT ARE NOT LIMITED TO: CONTRACT BOND, EQUIPMENT HAULING, ROADWAY TOLLS AND FARES, LOCAL OR STATE GOVERNMENT PERMITS OR FEES, OR ANY OTHER REQUIREMENT STATED IN THE PROJECT SPECIFICATIONS.
- AREAS WITHIN RIGHT-OF-WAY WHICH ARE UTILIZED BY CONSTRUCTION TRAFFIC ARE TO BE SWEEPED PRIOR TO OPENING TO PUBLIC TRAFFIC. IT IS THE RESPONSIBILITY OF THE CONTRACTOR TO REMOVE ANY DEBRIS LEFT ON ADJACENT PUBLIC ROADWAYS OR RIGHTS-OF-WAY THAT WERE A DIRECT OR INDIRECT RESULT FROM CONSTRUCTION ACTIVITIES OF THIS PROJECT. THE UTILIZATION OF A VACUUM OR PICKUP TYPE SWEEPER IS REQUIRED TO MINIMIZE AIR CONTAMINATION. THE COST FOR PAVEMENT SWEEPING IS TO BE INCLUDED IN THE PRICES BID FOR OTHER PROJECT TASKS.
- THE CONTRACTOR SHALL PROTECT ALL PROPERTY CORNER MONUMENTS ASSOCIATED WITH THE SUBJECT AND ADJACENT PROPERTIES. CORNER MONUMENTS DISTURBED OR DESTROYED SHALL BE REPLACED BY A PROFESSIONAL LAND SURVEYOR LICENSED IN NORTH DAKOTA AT THE CONTRACTOR'S EXPENSE.
- IN THE EVENT THAT ANY DISCREPANCY BETWEEN THE STANDARD SPECIFICATIONS AND THE BID DOCUMENTS ISSUED BY THE GENERAL CONTRACTOR OR PLANS WHICH HAVE BEEN SIGNED AND SEALED BY THE ISSUING ENGINEER EXISTS, THE PLANS SHALL GOVERN.
- THE STANDARD SPECIFICATIONS FOR THIS PROJECT SHALL BE "CONSTRUCTION SPECIFICATIONS FOR MUNICIPAL PUBLIC WORKS IMPROVEMENTS, BISMARCK, NORTH DAKOTA" AS APPROVED AND ISSUED MARCH 2019 BY GABRIEL J. SCHELL. THE STANDARD SPECIFICATIONS CAN BE LOCATED AT: <http://www.bismarcknd.gov/documents/cenrview/3342773/specifications-full-set>. IN THE EVENT A DISCREPANCY EXISTS BETWEEN THE PLANS AND STANDARD SPECIFICATIONS, THE PLANS SHALL SUPERSEDE.

LANDSCAPE PLAN NOTES

- THE CONTRACTOR SHALL PROVIDE A ONE YEAR GUARANTEE OF ALL PLANTS AND MATERIALS. THE GUARANTEE BEGINS ON THE DATE OF THE ENGINEER'S WRITTEN ACCEPTANCE OF THE INITIAL PLANTING. REPLACEMENT MATERIALS SHALL ALSO HAVE A ONE YEAR GUARANTEE COMMENCING UPON PLANTING.
- ALL PLANTS TO BE INSTALLED ARE TO BE NORTHERN-GROWN, HARDY, AND INSTALLED PER STANDARD AAN PLANTING PRACTICES.
- USE A MINIMUM 60% SHADY LOCATIONS OR ALL UTILITIES PRIOR TO THE INSTALLATION OF PLANTS.
- THE CONTRACTOR SHALL VERIFY THE LOCATION OF ALL UTILITIES PRIOR TO THE INSTALLATION OF PLANTS.
- PRUNE PLANTS AS NECESSARY - PER STANDARD HURSEY PRACTICE.
- OWNER SHALL BE RESPONSIBLE FOR MAINTENANCE ONLY AFTER ACCEPTANCE OF THE WORK BY THE ENGINEER.
- PLANTS SHALL BE IMMEDIATELY PLANTED UPON ARRIVAL AT SITE. TEMPORARILY HELD MATERIALS IF NECESSARY.
- PLANTING BEDS FOR SHRUBS SHALL HAVE 1/2" (MIN.) WEED BARRIER FABRIC AND 4" IN TO 6" IN OF SHREDDED HARDWOOD MULCH.
- SEED MIX SHALL BE CONSIDERED "CLASS II" AND APPROVED BY THE ENGINEER PRIOR TO INSTALLATION.
- PRIOR TO SEEDING, A MINIMUM OF 4-INCHES OF TOPSOIL IS TO BE LAD AND SHALL BE FREE OF VEGETATION AND STONES LARGER THAN 1-INCH.
- THE CONTRACTOR SHALL FURNISH THE ENGINEER DUPLICATE SIGNED COPIES OF A STATEMENT BY THE VENDOR CERTIFYING THAT EACH LOT OF SEED HAS BEEN TESTED BY A RECOGNIZED LABORATORY FOR SEED TESTING WITHIN NINE MONTHS OF THE DATE OF DELIVERY.
- DESIGN OF THE IRRIGATION SYSTEM TO BE THE RESPONSIBILITY OF THE LANDSCAPE CONTRACTOR.
- SIZES GIVEN FOR TREE AND SHRUB PLANTING ARE MATURE HEIGHT AND SPREAD.
- CONTRACTOR TO COORDINATE IRRIGATION SYSTEM WITH OWNER.

LANDSCAPE PLAN QUANTITIES

ITEM	DESCRIPTION	UNIT	QUANTITY
1	LANDSCAPE MULCH	SY	865
2	TREE / SHRUB MULCHING	EA	112
3	DECIDUOUS SHADE TREE	EA	12
4	SHRUB	EA	100
5	IRRIGATION SYSTEM	LSUM	1

ACCEPTABLE SPECIES

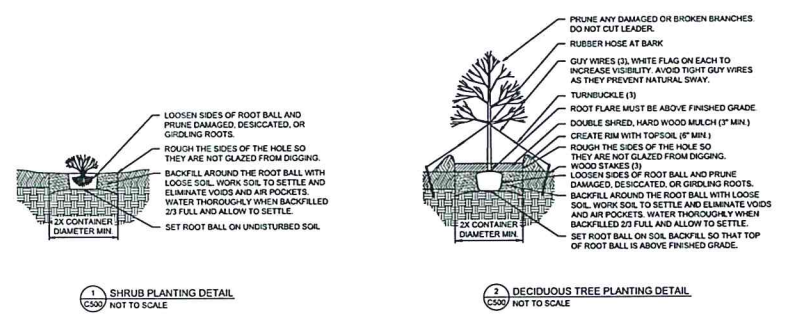
Legend Type	Minimum Size	Common Name	Scientific Name	QTY
Deciduous Shade Tree	1.5" at 6" above root collar	Quaking Aspen (QA)	Populus tremuloids	0
		Kentucky Coffeetree (Male) (KC)	Gymnocladus dioica	10
		American Linden (AL)	Tilia americana	2
Dec. Om. Tree	1.5" at 6" above root collar	Flowering Crabapple (FC)	Malus Spring Snow	0
Sm. Coniferous Tree	Minimum height of 2' above grade or a minimum container size of 2 gallons	Medora Juniper (MJ)	Juniperus scopulorum 'Medora'	0
		Redosier Dogwood (RD)	Cornus sericea	7
Shrub	Minimum height of 2' above grade or a minimum container size of 2 gallons	Golden / Clove Currant (GC)	Ribes coccineum	19
		Vanhoutte Spirea (VS)	Spiraea x vanhouttei	36
		Smooth Hydrangea (SH)	Hydrangea aborescens	38

ALTERNATE 6 QUANTITIES - LANDSCAPE SOUTH SIDE OF BUILDING

ITEM	DESCRIPTION	UNIT	QUANTITY
A	CLEAN EXISTING ROCK	LSUM	1
B	NEW LANDSCAPE ROCK	LSUM	1
C	PROVIDE (8) NEW TREES	LSUM	1
D	PROVIDE (50) NEW SHRUBS	LSUM	1

ALTERNATE 6 - ACCEPTABLE SPECIES

Legend Type	Minimum Size	Common Name	Scientific Name	QTY
Deciduous Shade Tree	1.5" at 6" above root collar	Quaking Aspen (QA)	Populus tremuloids	0
		Kentucky Coffeetree (Male) (KC)	Gymnocladus dioica	0
		American Linden (AL)	Tilia americana	0
Dec. Om. Tree	1.5" at 6" above root collar	Flowering Crabapple (FC)	Malus Spring Snow	8
Sm. Coniferous Tree	Minimum height of 2' above grade or a minimum container size of 2 gallons	Medora Juniper (MJ)	Juniperus scopulorum 'Medora'	0
		Redosier Dogwood (RD)	Cornus sericea	24
Shrub	Minimum height of 2' above grade or a minimum container size of 2 gallons	Golden / Clove Currant (GC)	Ribes coccineum	28
		Vanhoutte Spirea (VS)	Spiraea x vanhouttei	0
		Smooth Hydrangea (SH)	Hydrangea aborescens	0



APPROVED BY FORESTRY
[Signature]
LANDSCAPE 2/18/21
TITLE DATE

APPROVED BY PLANNING
[Signature]
PLANNER 2/18/21
TITLE DATE

OWNER
SANFORD HEALTH
715 E BROADWAY AVE
BISMARCK, ND 58501

ARCHITECT
HKS, INC.
125 SOUTH CLARK STREET, SUITE 1100
CHICAGO, IL 60603

ARCHITECT
JLG ARCHITECTS
418 EAST MAIN AVE
BISMARCK, ND 58501

STRUCTURAL
CW STRUCTURAL ENGINEERS
1000 E CALDWAY AVE, SUITE 2
BISMARCK, ND 58503

CIVIL
MOUNTAIN PLANS, LLC
1300 TACOMA AVE, SUITE A
BISMARCK, ND 58504

MECHANICAL
PRAIRIE ENGINEERING, P.C.
419 RIVERWOOD DRIVE, SUITE 205
BISMARCK, ND 58504

ELECTRICAL
APEX ENGINEERING GROUP
600 SOUTH 2ND STREET, SUITE 145
BISMARCK, ND 58504



SANFORD HEALTH
OUTPATIENT SURGERY CENTER

REVISION

NO.	DESCRIPTION	DATE
1	CITY COMMENTS	2/17/21

HKS PROJECT NUMBER
22607-102

DATE
AUGUST 24, 2020

ISSUE
ISSUED FOR BID

SHEET TITLE
LANDSCAPE PLAN