

SP2020-070

PLOT DATE & TIME: 10/05/2020 11:08 AM

C:\Users\BrianZ\OneDrive\Engineering\Projects\Premier Homes\002222 - Hay Creek Meadows\DESIGN\SURVEY\CAD\Hay_Creek_Meadows.dwg

NOTES

- 1 BEARINGS AND DIMENSIONS FOR LOTS SHOWN ARE BASED ON THE APPROVED PLAT "HAY CREEK MEADOWS 2ND ADDITION" AND THE APPROVED PLATS OF IRREGULAR DESCRIPTION FOR LOTS 9A, 9B, 10A, AND 10B.
- 2 SETBACK DIMENSIONS SHOWN FOR CITY OF BISMARCK RM ZONING.
- 3 UNDERGROUND UTILITIES SHOWN ARE PROVIDED BY CITY OF BISMARCK GIS DATABASE..

APPROVED BY PLANNING

Wm Hawley
Planner 10/12/20
 TITLE DATE

APPROVED BY FORESTRY

D. [Signature]
City Forester 10/12/20
 TITLE DATE

LEGEND

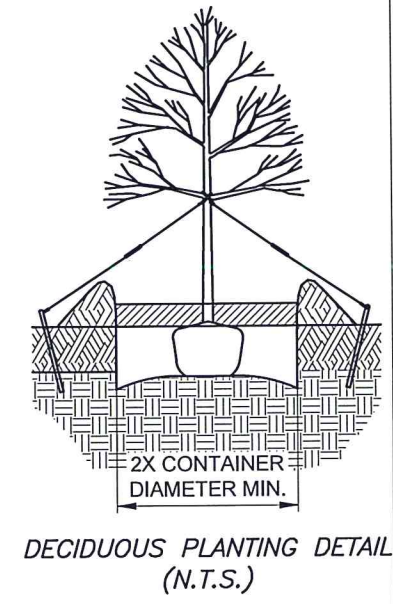
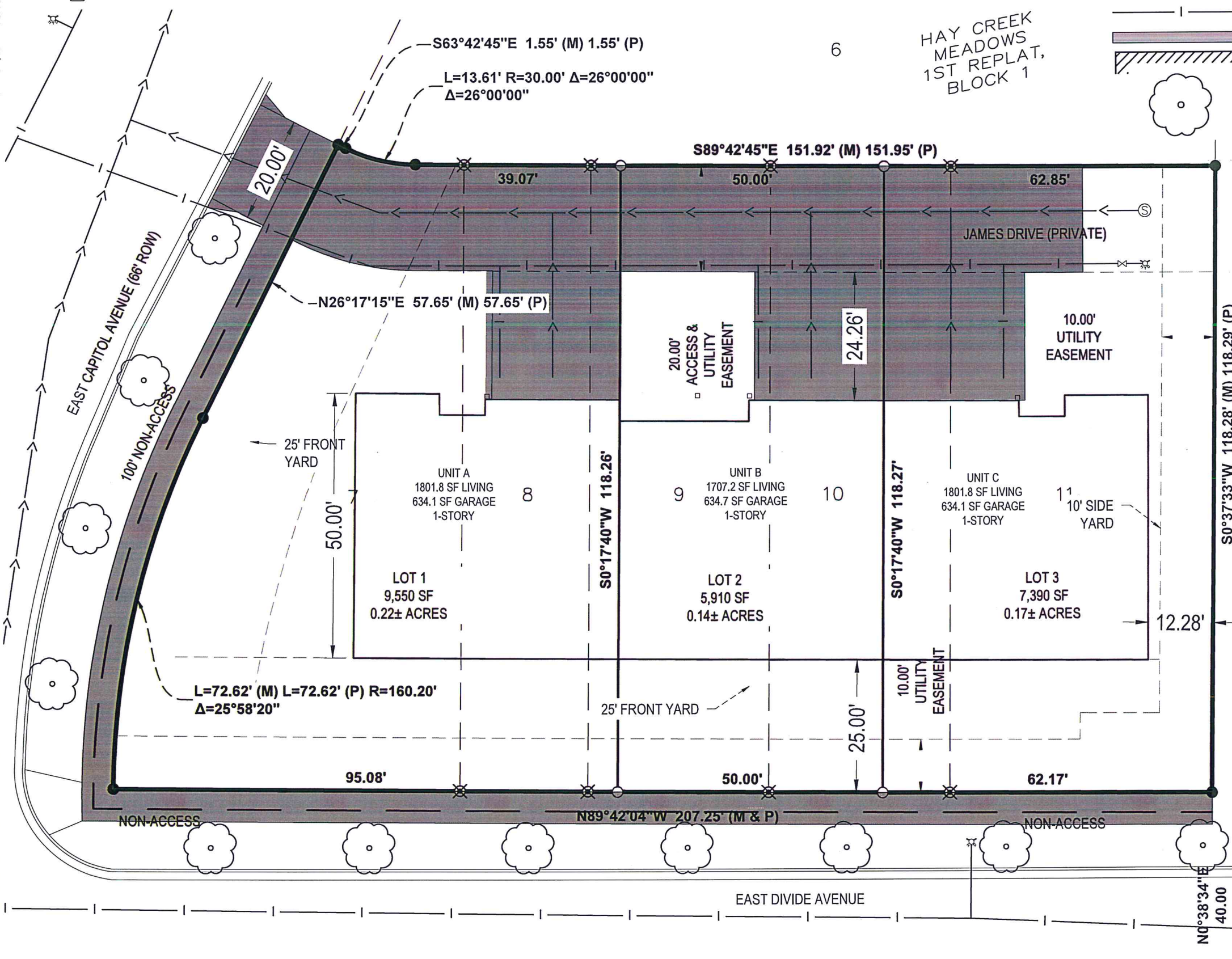
- SANITARY MANHOLE
- SANITARY SEWER
- WATERMAIN
- PROPOSED DRIVEWAY
- ▨ PROPOSED BUILDING
- LINDEN, AMERICAN (TILIA AMERICANA) 11 REQUIRED



1300 TACOMA AVENUE, SUITE A | BISMARCK, ND 58504
 (701) 557-3348 | WWW.MTNPLAINS.COM

**HAY CREEK MEADOWS
 PROPOSED SITE LAYOUT**

PREMIER HOMES, INC.
 2041 40TH AVE SE, SUITE 112 | MANDAN, ND 58554



NO.	DATE	DESCRIPTION
DATE:	October 5, 2020	
PROJECT NO:	002222	DRWN BY: BJZ
SHEET NO:	1 OF 1	
SHEET TITLE:	PROPOSED LAYOUT	