

APPROVED BY PLANNING

*Walt Huber*  
PLANNER 8-2-18  
TITLE DATE

APPROVED BY FORESTRY

*Moe Miller*  
LANDSCAPING 8-2-18  
TITLE DATE

SYMBOL LEGEND

- NEW 5" BITUMINOUS PAVEMENT OVER NEW 6" AGGREGATE BASE SEE DETAIL 1/C5
- MATCH EXISTING TRAIL PAVEMENT SECTION
- NEW 4" CONCRETE PAVEMENT OVER NEW 2" CLEAN SAND SEE DETAIL 2/C5
- DRIVEWAYS TO BE INSTALLED WITH COTTAGE CONSTRUCTION

- PROPERTY LINE
- EASEMENT LINE
- RIGHT-OF-WAY LINE
- SETBACK LINE

WHERE APPLICABLE, DIMENSIONS ARE FROM BACK OF CURB TO BACK OF CURB OR BACK OF CURB TO END OF STALL LINE.

- STORM SEWER PIPE
- CATCH BASIN
- FLARED END

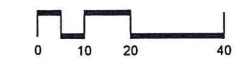
UTILITY NOTES

- It is the responsibility of the contractor to perform or coordinate all necessary utility connections and relocations from existing utility locations to the proposed building, as well as to all onsite amenities. These connections include but are not limited to water, sanitary sewer, cable TV, telephone, gas, electric, site lighting, etc.
- All service connections shall be performed in accordance with state and local standard specifications for construction. Utility connections (sanitary sewer and watermain) may require a permit from the City.
- The contractor shall verify the elevations at proposed connections to existing utilities prior to any demolition or excavation.
- The contractor shall notify all appropriate engineering departments and utility companies 72 hours prior to construction. All necessary precautions shall be made to avoid damage to existing utilities.
- Maintain a minimum of 8' of cover over all water lines and sanitary sewer lines. Install water lines 18" above sanitary sewers, where the sanitary sewer crosses over the water line, install sewer piping of materials equal to watermain standards for 9 feet on both sides and maintain 18" of separation.
- Verify location and depth of existing watermain. Where 8' of cover is not provided over watermain, install 2" rigid polystyrene insulation with a thermal resistance of at least 5 and a compressive strength of at least 25 psi. Insulation shall be 8" wide, centered over pipe with 6" sand cushion between pipe and insulation. Where depth is less than 5', use 4" of insulation.
- See Project Specifications for bedding requirements.
- All RCP pipe shown on the plans shall be Class III in accordance with ASTM C76, Wall B.
- All utilities shall be installed per City of Bismarck standards.

PLANT SCHEDULE

REVISED 8/1/18

Sym.	Common Name	Scientific Name	Size	Qty.
	Boulevard Linden	Tilia americana 'Boulevard'	1-1/2" Cal.	17



**Larson Engineering, Inc.**  
3524 Labore Road  
White Bear Lake, MN 55110  
651.481.9120 (F) 651.481.9201  
www.larsonengr.com

© 2017 Larson Engineering, Inc. All rights reserved.

**TOUCHMARK**  
5150 SW GRIFFITH DRIVE  
BEAVERTON, OR 97005

**DUPLEX COTTAGES**  
BISMARCK, ND

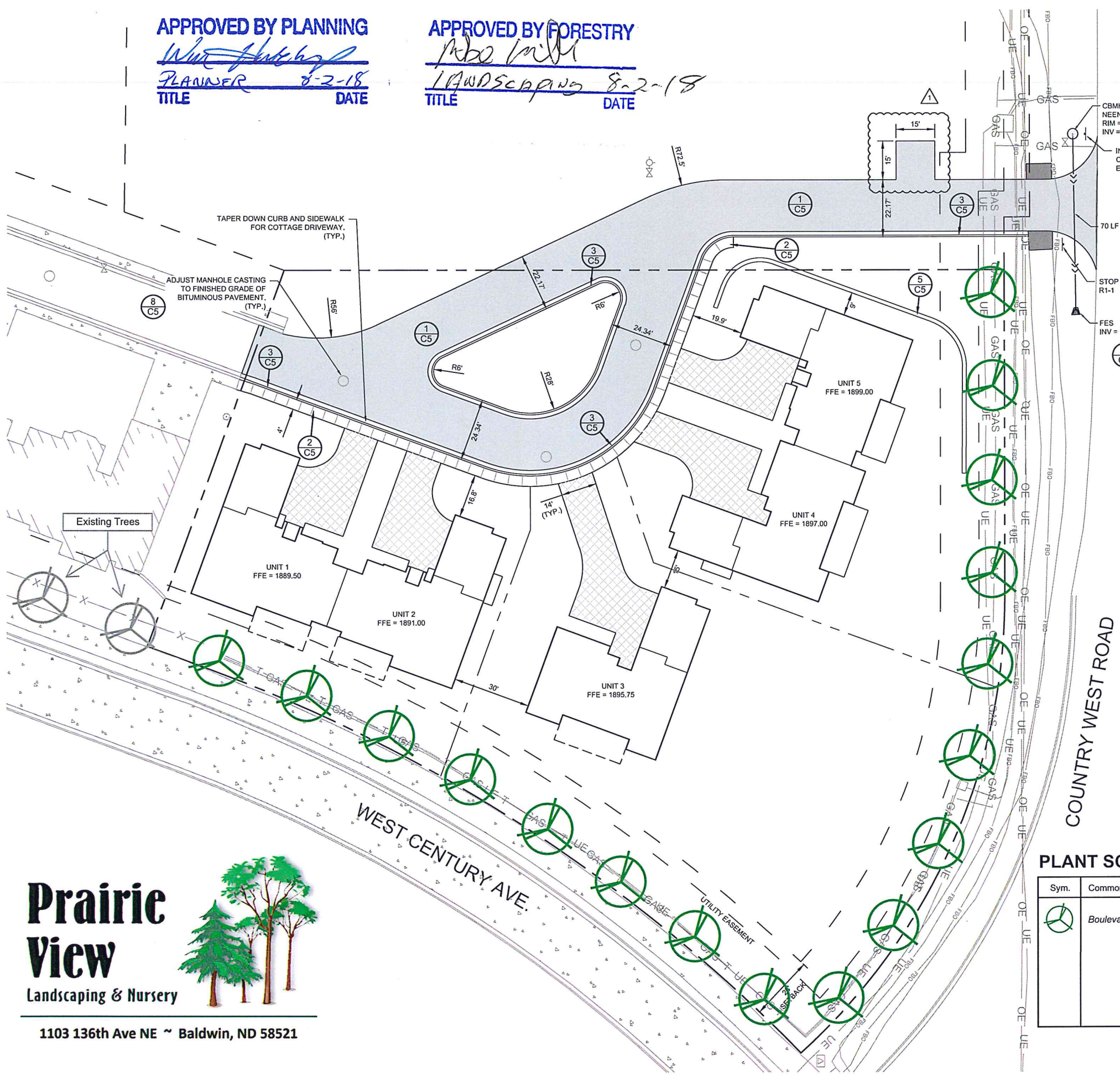
THIS DOCUMENT WAS ORIGINALLY ISSUED AND SEALED BY  
**MATT WOODRUFF,**  
REGISTRATION NUMBER PE-9281,  
ON 09.28.2017 AND THE ORIGINAL DOCUMENT IS STORED AT  
LARSON ENGINEERING, INC.  
WHITE BEAR LAKE, MN

Rev.	Date	Description
1	07.03.18	Fire Marshal Comments

Project #: 12166048  
Drawn By: JAN  
Checked By: MJW  
Issue Date: 09.28.17  
Sheet Title:

PAVING AND UTILITY PLAN

**C2**



SP 2018-055

**Prairie View**  
Landscaping & Nursery



1103 136th Ave NE ~ Baldwin, ND 58521