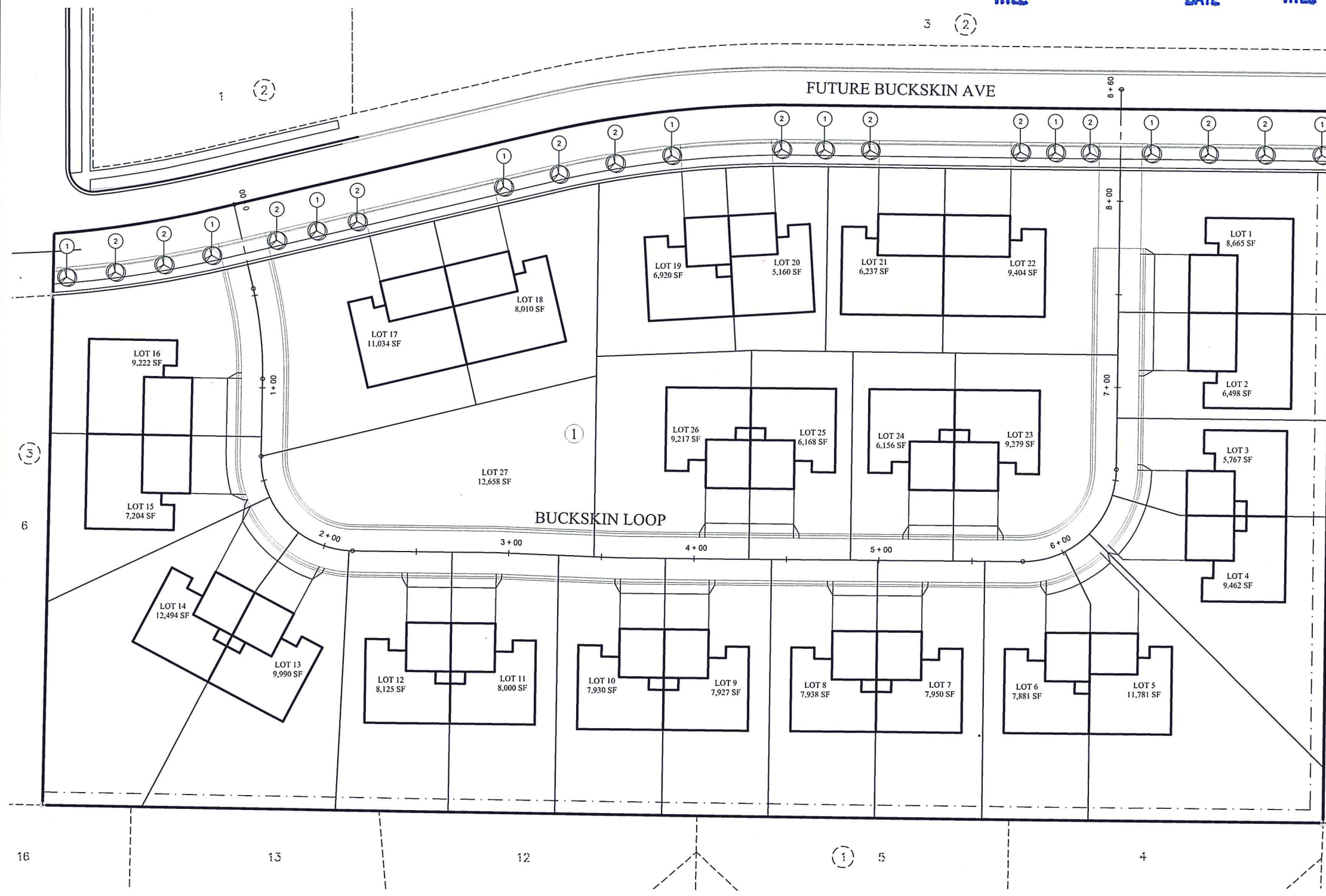


APPROVED BY PLANNING

[Signature]
 Planning 6-14-18
 TITLE DATE

APPROVED BY FORESTRY

[Signature]
 Landscaping 6-14-18
 TITLE DATE



NOTES:

1. LANDSCAPE CONTRACTOR IS RESPONSIBLE FOR AND SHALL MAINTAIN THE LANDSCAPING FOR 90 DAYS PAST THE FINAL INSPECTION.
2. GENERAL CONTRACTOR SHALL GUARANTEE ALL PLANT MATERIAL FOR A PERIOD OF ONE (1) YEAR FROM DATE OF PROJECT SUBSTANTIAL COMPLETION.
3. ALL PLANT MATERIAL SHALL MEET MINIMUM REQUIREMENTS SHOWN IN THE "AMERICAN STANDARDS FOR NURSERY STOCK" (ANSI Z60.1-1990).
4. EACH TREE AND SHRUB SHALL BE SECURELY LABELED WITH A WATERPROOF TAG INDICATING BOTANICAL NAME AND COMMON NAME FOR DELIVERY TO SITE.
5. NO PLANT MATERIAL SHALL BE SUBSTITUTED WITHOUT THE APPROVAL OF THE OWNER. ALL PLANTING LOCATIONS FOR TREES AND SHRUBS SHALL BE FLAGGED BY THE CONTRACTOR AND APPROVED BY THE OWNER, PRIOR TO INSTALLATION.
6. ALL SHRUB AND TREE PLANTING AREAS SHALL BE EXCAVATED AND BACK-FILLED WITH PLANT MIX. PROVIDE FERTILIZER WITH NOT LESS THAN 5% NITROGEN, 10% AVAILABLE PHOSPHORIC ACID AND 5% SOLUBLE POTASH, DISCARD SUBSOIL REMOVED FROM PLANTING AREA EXCAVATION. DO NOT MIX WITH PLANT MIX OR USE AS BACK-FILL. SEE DETAILS FOR COMPLETE PLANTING PREPARATION. PREPARE PLANTING AREAS AND INSTALL PLANTS COMPLETELY, PRIOR TO SEEDING.
7. CONTRACTOR SHALL OBTAIN PROPER PERMITS FROM THE CITY OF BISMARCK WHEN WORKING WITHIN THE RIGHT OF WAY.

PLANTING SCHEDULE:

Key	Common Name	Botanical Name	Qty.	Size	Cond.
Trees					
1	American Linden 'Boulevard'	Tilia americana	9	1.5" cal. min.	B & B
2	Hackberry	Celtis occidentalis	12	1.0" cal. min.	B & B

Shade Trees 1.5" Caliper measured 6" above the root collar
 Ornamental Trees 1.0" Caliper measured 6" above the root collar
 Large Coniferous Tree 4 feet above grade
 Shrubs 2 gal Container



DRAWN BY:	MG			
DESIGNER:	MG			
CHECKED BY:	KN			
DESIGN TEAM	NO.	BY	DATE	REVISIONS

HORIZONTAL DATUM:
 North Dakota State Plane Coordinate System
 NAD 83 South Zone 3302 (Adjusted 88)
 International Units
 VERTICAL DATUM:
 National Geodetic Vertical Datum of 1929

PHONE: 701.354.7121
 4719 SHELburnE ST, SUITE 6
 BISMARCK, ND 58503-5877
 www.sehinc.com

HUNTINGTON COTTAGES
 BISMARCK, NORTH DAKOTA

Future Landscaping Plan

FILE NO.
 144666

09
 of 9

P:\A\B\B\02E\144666\5-14\dwg\13-Civil\cdwg\plan\cdwg\144666_Huntington Cottages_Plan.cdwg, 6/7/2018 2:09:11 PM