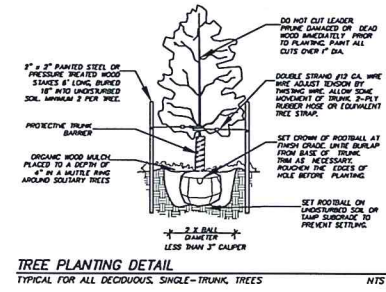
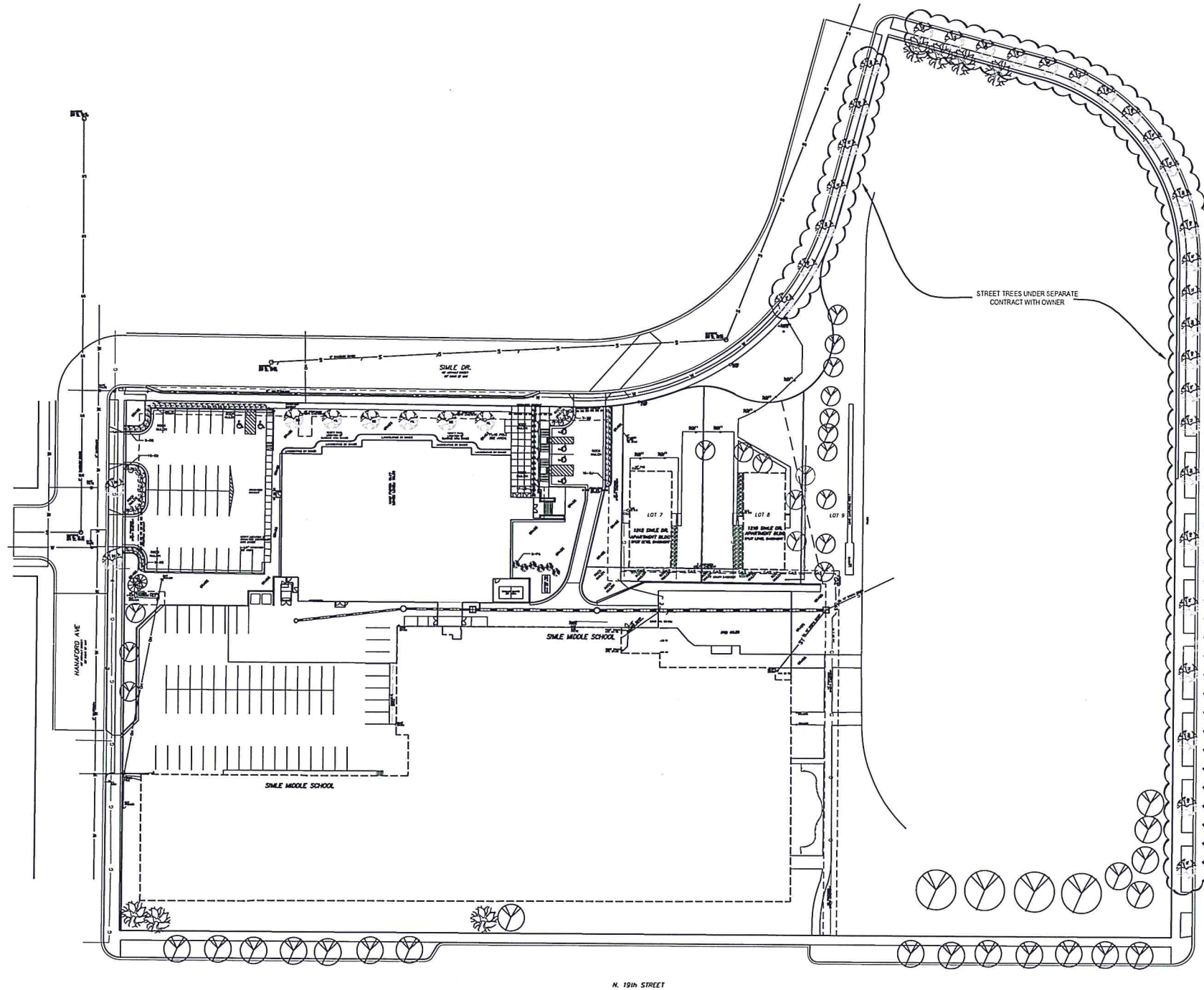


# SIMLE STREET TREES



### GENERAL LANDSCAPING NOTES

- 1. ALL CONTRACTORS WISHING TO SUBMIT BIDS FOR THIS LANDSCAPING PROJECT SHALL BE RESPONSIBLE FOR FIELD VERIFYING ALL CONDITIONS.
- 2. PROTECT THE IMPROVEMENTS ON SITE AND ON THE ADJOINING PROPERTIES. PROVIDE BARRICADES, COVERINGS OR OTHER TYPE OF PROTECTION AS NECESSARY TO PREVENT DAMAGE AND TO SAFEGUARD AGAINST INJURY TO EXISTING UTILITIES.
- 3. DAMAGE THAT OCCURS TO PLANTS DURING TRANSPORTATION AND INSTALLATION WILL BE THE RESPONSIBILITY OF THE LANDSCAPE CONTRACTOR.
- 4. ALL LANDSCAPE PLANTINGS ARE TO BE WATERED BY THE LANDSCAPE CONTRACTOR THE SAME DAY THAT THE PLANTING OCCURS. IF WATER IS NOT AVAILABLE AT THE BUILDING, THE LANDSCAPE CONTRACTOR SHALL PROVIDE ALTERNATIVE METHODS FOR WATERING.
- 5. SOLITARY TREES DO NOT NEED TO BE EDGED AROUND, HOWEVER ORGANIC WOOD MULCH SHALL BE PLACED AROUND THE TREE IN A MATTLE RING THAT CONFORMS TO THE DETAIL PROVIDED FOR TREE PLANTINGS.
- 6. CONTRACTOR SHALL PROVIDE WRITTEN WARRANTIES CONFIRMING THE FOLLOWING:  
FURNISHED TREES GUARANTEED TO LIVE AND REMAIN STRONG, VIGOROUS AND HEALTHY CONDITION FOR 365 DAYS MINIMUM FROM DATE LANDSCAPE INSTALLATION IS ACCEPTED AS COMPLETED.

### PLANT PALETTE

SYMBOL	COMMON NAME	SCIENTIFIC NAME	SIZE	QTY.
HL	HONEYLOCUST	<i>Gleditsia triacanthos var. inermis</i>	1-1/2" Cal.	9
HB	COMMON HAZELBERRY	<i>Celtis occidentalis</i>	1-1/2" Cal.	8
LL	HYBRID LINDEN	<i>Tilia x florescens</i>	1-1/2" Cal.	7
SM	SILVER MAPLE	<i>Acer saccharinum</i>	1-1/2" Cal.	8

APPROVED BY FORESTRY

APPROVED BY PLANNING

Wolob  
LANDSCAPE 3/31/17  
DATE

John Wallock  
3/31/17  
DATE

**WARRANTY / DISCLAIMER**  
The design represented in these plans are in accordance with the professional practice of landscape architecture. However, no warranty is made as to the performance of the work. The contractor shall be responsible for the proper installation and maintenance of the work.

**SAFETY NOTICE TO CONTRACTOR**  
In accordance with generally accepted construction practices, the contractor shall be responsible for the safety of the work. The contractor shall be responsible for the proper installation and maintenance of the work.

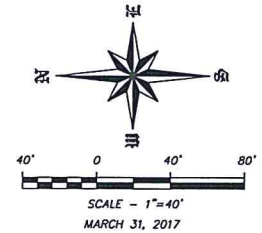
**NOTICE TO CONTRACTOR**  
The location of existing underground utilities are shown in an approximate manner. The contractor shall be responsible for the proper installation and maintenance of the work.

**CALL BEFORE YOU DIG**  
NORTH DAKOTA  
UTILITIES UNDERGROUND LOCATION SERVICE  
1-800-795-0555

Copyright © 2017 by Swenson, Hagen & Co.  
All rights reserved. No part of this drawing may be used or reproduced in any form or by any means without the express written permission of Swenson, Hagen & Co.

**SWENSON, HAGEN & COMPANY P.C.**  
999 Bevin Avenue  
Bismarck, North Dakota 58504  
Phone (701) 223-2600  
Fax (701) 223-2606

Surveying  
Hydrology  
Land Planning  
Civil Engineering  
Landscape & Site Design  
Construction Management



Bismarck Public Schools  
Simle Middle School  
Bismarck, North Dakota