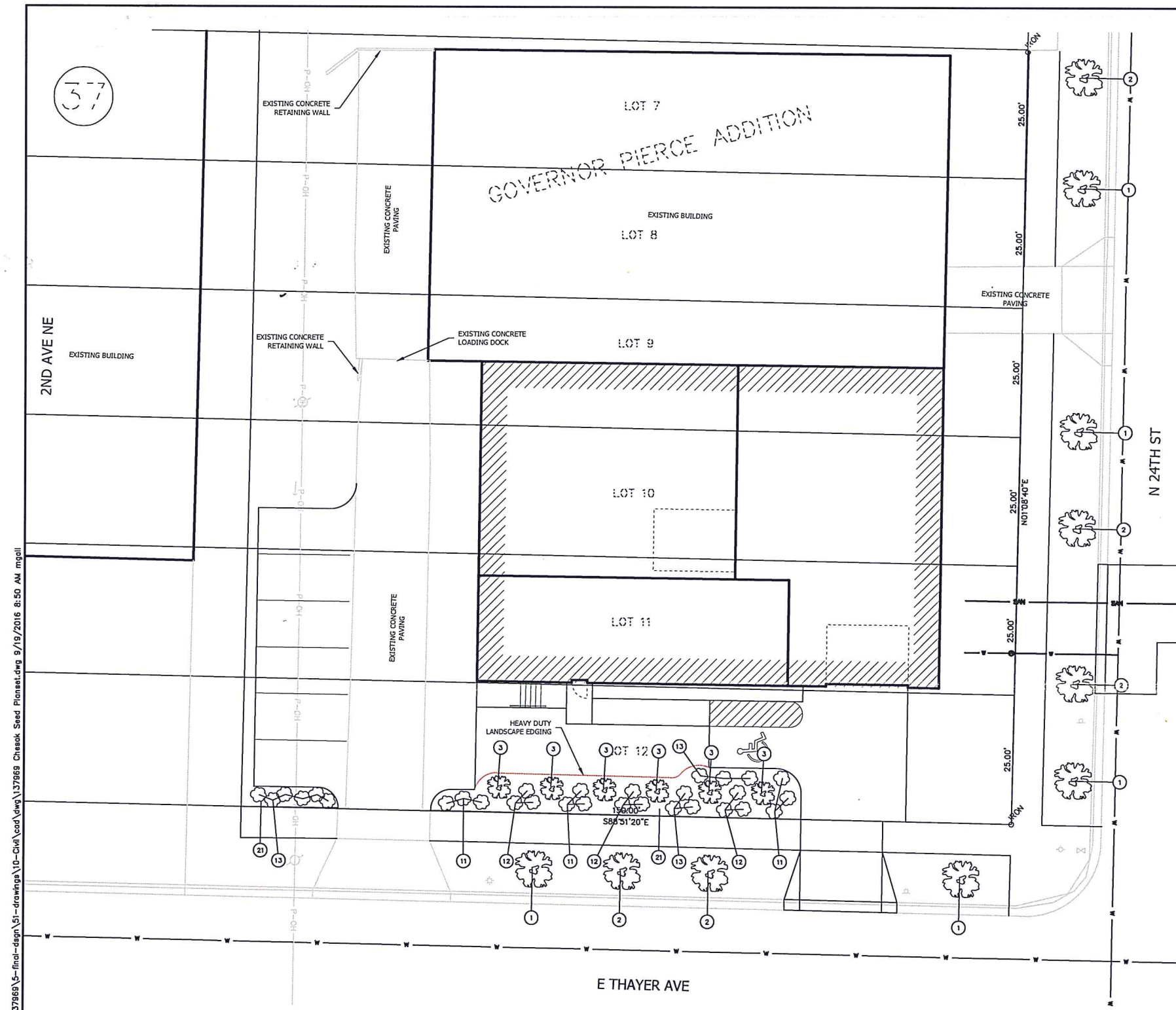


APPROVED BY FORESTRY

*John M. Maly*  
LANDSCAPE 1/24/17  
DATE

APPROVED BY PLANNING

*John M. Maly*  
PLANNING 1/24/17  
DATE



- NOTES:**
- LANDSCAPE CONTRACTOR IS RESPONSIBLE FOR AND SHALL MAINTAIN THE LANDSCAPING FOR 90 DAYS PAST THE FINAL INSPECTION.
  - GENERAL CONTRACTOR SHALL GUARANTEE ALL PLANT MATERIAL FOR A PERIOD OF ONE (1) YEAR FROM DATE OF PROJECT SUBSTANTIAL COMPLETION.
  - ALL PLANT MATERIAL SHALL MEET MINIMUM REQUIREMENTS SHOWN IN THE "AMERICAN STANDARDS FOR NURSERY STOCK" (ANSI Z60.1-1990).
  - EACH TREE AND SHRUB SHALL BE SECURELY LABELED WITH A WATERPROOF TAG INDICATING BOTANICAL NAME AND COMMON NAME FOR DELIVERY TO SITE.
  - NO PLANT MATERIAL SHALL BE SUBSTITUTED WITHOUT THE APPROVAL OF THE OWNER. ALL PLANTING LOCATIONS FOR TREES AND SHRUBS SHALL BE FLAGGED BY THE CONTRACTOR AND APPROVED BY THE OWNER, PRIOR TO INSTALLATION.
  - ALL SHRUB AND TREE PLANTING AREAS SHALL BE EXCAVATED AND BACK-FILLED WITH PLANT MIX. PROVIDE FERTILIZER WITH NOT LESS THAN 5% NITROGEN, 10% AVAILABLE PHOSPHORIC ACID AND 5% SOLUBLE POTASH, DISCARD SUBSOIL REMOVED FROM PLANTING AREA EXCAVATION. DO NOT MIX WITH PLANT MIX OR USE AS BACK-FILL. SEE DETAILS FOR COMPLETE PLANTING PREPARATION. PREPARE PLANTING AREAS AND INSTALL PLANTS COMPLETELY, PRIOR TO SEEDING.
  - ALL SHRUBS SHALL BE INSTALLED IN PROPOSED PLANTING BEDS AND COVERED WITH SHREDDED BARK MULCH OR ACCEPTABLE MATERIAL.
  - SPACING SHOWN FOR PLANTS IS FOR INFORMATION ONLY AND SHALL BE ADJUSTED AS REQUIRED TO PROVIDE UNIFORM SPACING WITHIN THE PLANTING BEDS.
  - LANDSCAPE CONTRACTOR SHALL VERIFY ALL UTILITY LOCATIONS.
  - MULCH MASS PLANTING BEDS WITH SHREDDED HARDWOOD MULCH TO 4 INCH DEPTH OVER FIBER MAT WEED BARRIER. ALL FOUNDATION PLANTING BEDS TO RECEIVE 4" PVC COMMERCIAL GRADE EDGER AND 3" OF DECORATIVE GRAVEL OVER 6 MIL BLACK POLY LANDSCAPE FABRIC. SITE PERENNIAL PLANTING BEDS TO RECEIVE 3" DEEP SHREDDED HARDWOOD MULCH WITH NO MULCH IN DIRECT CONTACT WITH THE TREE TRUNK.
  - IT SHALL BE THE CONTRACTORS OPTION TO STAKE AND/OR GUY THE TREES ACCORDING TO THE PROVIDED DETAILS. IT IS THE CONTRACTORS RESPONSIBILITY TO TAKE EVERY STEP NECESSARY TO MAINTAIN THE TREES AND SHRUBS IN AN UP RIGHT AND PLUM CONDITION AT ALL TIMES UNTIL THE END OF THE PLANT GUARANTEE PERIOD, ESPECIALLY WHERE SOIL OR WIND CONDITIONS ARE A PROBLEM. AT THE END OF THE PLANT GUARANTEE PERIOD THE CONTRACTOR SHALL REMOVE STAKING, IF INSTALLED, PRIOR TO OWNER ACCEPTANCE.
  - EDGING SHALL BE 4" COMMERCIAL GRADE EDGING WITH THREE (3) METAL ANCHOR SETAKES PER 20 FOOT SECTION. ALL MASS PLANTING BEDS SHALL HAVE EDGING PLACED BETWEEN MULCH AREA AND ANY ADJACENT TURF AREA.

**PLANTING SCHEDULE:**

Key	Common Name	Botanical Name	Qty.	Size	Cond.
<b>Trees</b>					
1	Prairie Fire Crabapple	malus x hybrida 'Prairiefire'	3	2" col. min.	B & B
2	Autumn Boze Maple	Acer x freemanii 'Jeffersred'	5	2" col. min.	B & B
3	Ohio Buckeye	Aesculus glabra	6	2" col. min.	B & B
<b>Shrubs</b>					
11	Magic Carpet Spirea	Spiraea japonica cv x burmalide	9	2 gal.	Cont.
12	Carol Mackie Daphne	Daphne x burkwoodii	9	2 gal.	Cont.
13	Dwarf Mugho Pine	Pinus muhgo pumilio	12	2 gal.	Cont.
<b>Ground Cover</b>					
21	Crushed Rock				



DRAWN BY: MSG				
DESIGNER: MSG				
CHECKED BY: KEN				
DESIGN TEAM	NO.	BY	DATE	REVISIONS

**SEH**  
 PHONE: 701.354.7121  
 4719 SHELburne ST, SUITE 6  
 BISMARCK, ND 58503-5677  
 www.sehinc.com

Chesak Seed Expansion

LANDSCAPE PLAN

FILE NO.  
137969

C5

SP2016-041