

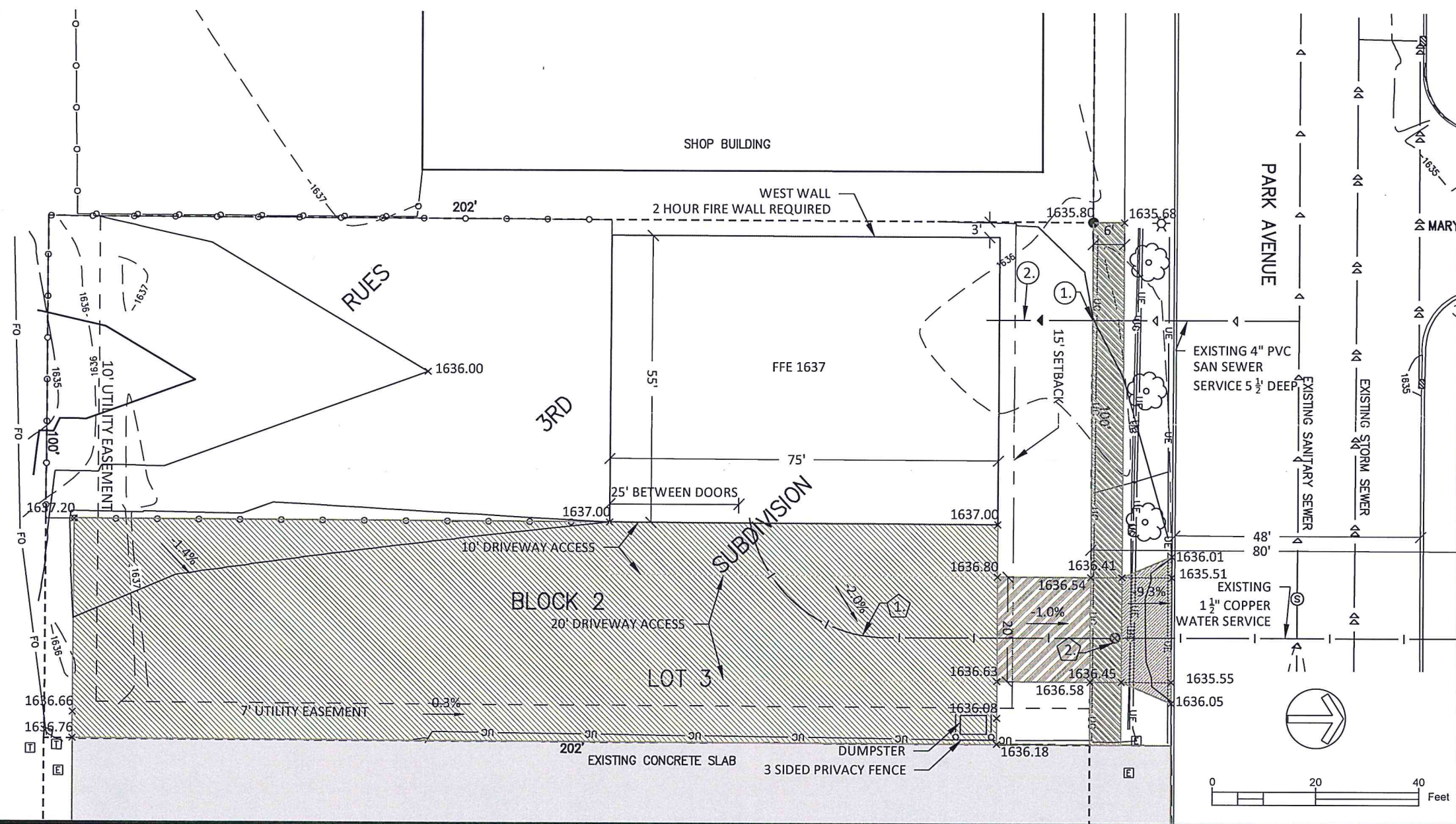
| LEGEND | | |
|---------------------|------------------------|-----------------------|
| ● FOUND MONUMENT | — — WATERMAIN | --- EASEMENT LINE |
| ▲ CONTROL POINT | — — SANITARY SEWER | --- CONCRETE CURB |
| ⊙ SPOT ELEVATION | — — STORM SEWER | --- PROPOSED LOT LINE |
| ⊙ STREET LIGHT | ⊙ ELECTRIC TRANSFORMER | --- PROPERTY LIMIT |
| ⊙ STORM SEWER INLET | ⊙ TELEPHONE PEDESTAL | --- CONTOUR |
| ⊙ GAS METER | --- EXISTING LOT LINE | |

- SANITARY SEWER SERVICE**
- DEPTH AT PROPERTY LINE = 5'-1" PROVIDE 4" PVC SEWER CONNECTION WITH COUPLING.
 - INSTALL APPROXIMATELY 20' OF 4" PVC TO PLUMBING FACILITIES. MINIMUM SLOPE 0.4%.

- WATER SERVICE**
- CONNECT 1 1/2" WATER SERVICE TO EXISTING CURB STOP.
 - INSTALL APPROXIMATELY 90' OF 1 1/2" POLY WATER SERVICE TO BUILDING PLUMBING.

- LANDSCAPING PLAN**
- STREET TREES
NUMBER - 3
SPECIES: MOUNTAIN ASH, SORBUS DECORA
OPINION OF INSTALLED COST: \$704.78

- NOTES**
- TOTAL PROPERTY AREA: 0.464 ACRES
IMPERVIOUS AREA: 294 ACRES
 - THE VERTICAL DATUM OF THE SURVEY DATA SHOWN HEREON IS THE NORTH AMERICAN VERTICAL DATUM OF 1988 (NAVD88).
 - PARKING SPACE
 - MINIMUM 9' REQUIRED IN FRONT OF BUILDING
 - 20' DRIVEWAY ACCESS
 - STREET FRONTAGE = 100'
 - ZONE MA - LIGHT INDUSTRIAL
 - USE: STORAGE, INDUSTRIAL GROUP A



APPROVED BY PLANNING
[Signature]
DATE

APPROVED BY FORESTRY
[Signature]
DATE

SURVEYOR
Sambatek
Engineering | Surveying
Planning | Environmental
12800 Whitewater Drive Suite 300
Minnetonka, MN 55343
763.476.6010 telephone
763.476.8532 facsimile
www.sambatek.com

ENGINEER
3617 Bottom Road
Bismarck, ND 58504
701-527-2451

Project
KOPP SHOP
Lot 3, Block 2,
Rues 3rd Addition

Location
1525 Park Ave
Bismarck, ND

Certification
This document was originally issued and sealed by Russel R. Sorenson, ND PE - 4694 on 10/05/16 and the original document is stored at 3617 Bottom Road Bismarck, ND 58504

Summary
Approved: rs Drawn: cs

Revision History
No. Date By Submittal / Rev.
10/27/2016 Revision

Sheet Title
SITE PLAN

Sheet No. Revision
1

Project No. 20631