

APPROVED BY FORESTRY

*Proctor*

LANDSCAPE ARCHITECT 3-23-17

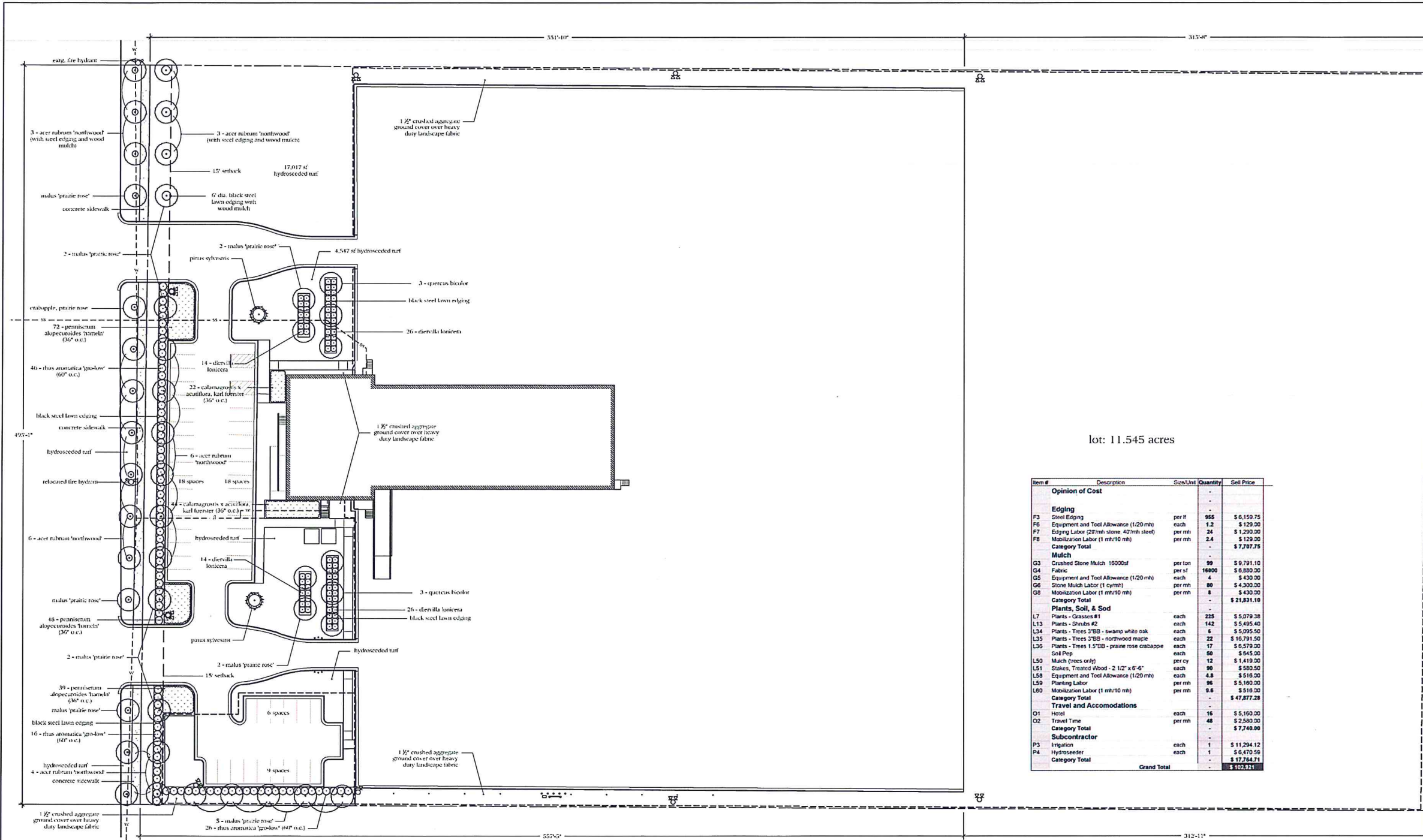
TITLE DATE

APPROVED BY PLANNING

*Planner*

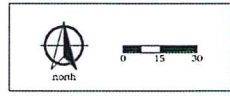
3/23/17

TITLE DATE



lot: 11.545 acres

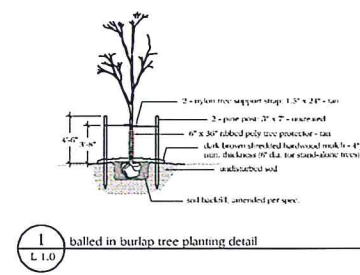
Item #	Description	Spec/Unit	Quantity	Sell Price
<b>Opinion of Cost</b>				
<b>Edging</b>				
F3	Steel Edging	per lf	955	\$ 6,159.75
F4	Equipment and Tool Allowance (1/20 mt)	each	1.2	\$ 129.00
F7	Edging Labor (22 mt/line, 42 hrs steel)	per mt	24	\$ 1,200.00
F8	Mobilization Labor (1 mt/10 mt)	per mt	2.4	\$ 120.00
<b>Category Total</b>				<b>\$ 7,709.75</b>
<b>Mulch</b>				
G3	Crushed Stone Mulch 15000sf	per ton	99	\$ 9,791.10
G4	Fabric	per sf	16600	\$ 8,850.00
G5	Equipment and Tool Allowance (1/20 mt)	each	4	\$ 430.00
G6	Stone Mulch Labor (1 cy/m)	per mt	80	\$ 4,300.00
G8	Mobilization Labor (1 mt/10 mt)	per mt	8	\$ 430.00
<b>Category Total</b>				<b>\$ 21,831.10</b>
<b>Plants, Soil, &amp; Sod</b>				
L7	Plants - Grasses #1	each	225	\$ 5,079.25
L13	Plants - Shrubs #2	each	142	\$ 5,495.40
L34	Plants - Trees 3"DB - swamp white oak	each	6	\$ 5,095.50
L35	Plants - Trees 3"DB - northwood maple	each	22	\$ 16,791.50
L36	Plants - Trees 1.5"DB - prairie rose crabapple	each	17	\$ 5,579.00
<b>Soil Prep</b>				<b>\$ 5,545.00</b>
L50	Mulch (trees only)	per cy	12	\$ 1,419.00
L51	Stakes, Treated Wood - 2 1/2" x 6"-6'	each	90	\$ 580.50
L58	Equipment and Tool Allowance (1/20 mt)	each	4.8	\$ 516.00
L59	Planting Labor	per mt	96	\$ 5,160.00
L60	Mobilization Labor (1 mt/10 mt)	per mt	9.6	\$ 516.00
<b>Category Total</b>				<b>\$ 47,877.28</b>
<b>Travel and Accomodations</b>				
O1	Hotel	each	16	\$ 5,160.00
O2	Travel Time	per mt	48	\$ 2,580.00
<b>Category Total</b>				<b>\$ 7,740.00</b>
<b>Subcontractor</b>				
P3	Irrigation	each	1	\$ 11,294.12
P4	Hydroseeder	each	1	\$ 6,470.59
<b>Category Total</b>				<b>\$ 17,764.71</b>
<b>Grand Total</b>				<b>\$ 102,921</b>



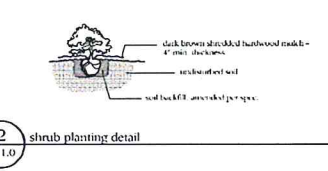
qty	size	name
166	#1	perennials
179	#1	grass, kaul foerster - calamagrostis x acutiflora, kaul foerster
		grass, hutchinson - penicillium alopecuroides 'hutch'
88	#2	shrubs
89	#2	ornamental, grass-like fragrant - thus aronica 'prockow'
		herb, hairy stalk, dwarf - diervilla lonicera
2	9' bb	evergreen
		pine, scotch - pinus sylvestris
17	1.5" db	trees
6	3" db	crabapple, prairie rose - malus 'prairie rose'
22	3" db	oak, swamp white - quercus bicolor
		maple, northwood - acer rubrum 'northwood'

**general notes**

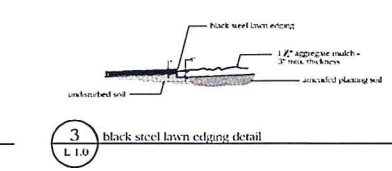
- all new planting spaces must be mulched to a 4" depth white incorporating 2" bark fines at a rate of 1 cf per 100sf.
- all landscape beds excavated in heavy duty landscape fabric and 1 1/2" aggregate, 2" depth.
- new planting spaces and tree mulch rings are edged with black steel lawn edging.



1 L 1.0

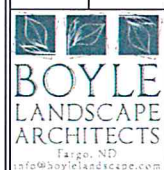


2 L 1.0



3 L 1.0

Old Dominion Freight Line  
Bismarck, ND  
Landscape Master Plan



REV	DATE	DESCRIPTION

DESIGN BY: PMB  
DRAWN BY: PMB  
DATE: 1/27/2017  
SCALE: 1"=30'  
SHEET # L1.0

SP2017-007