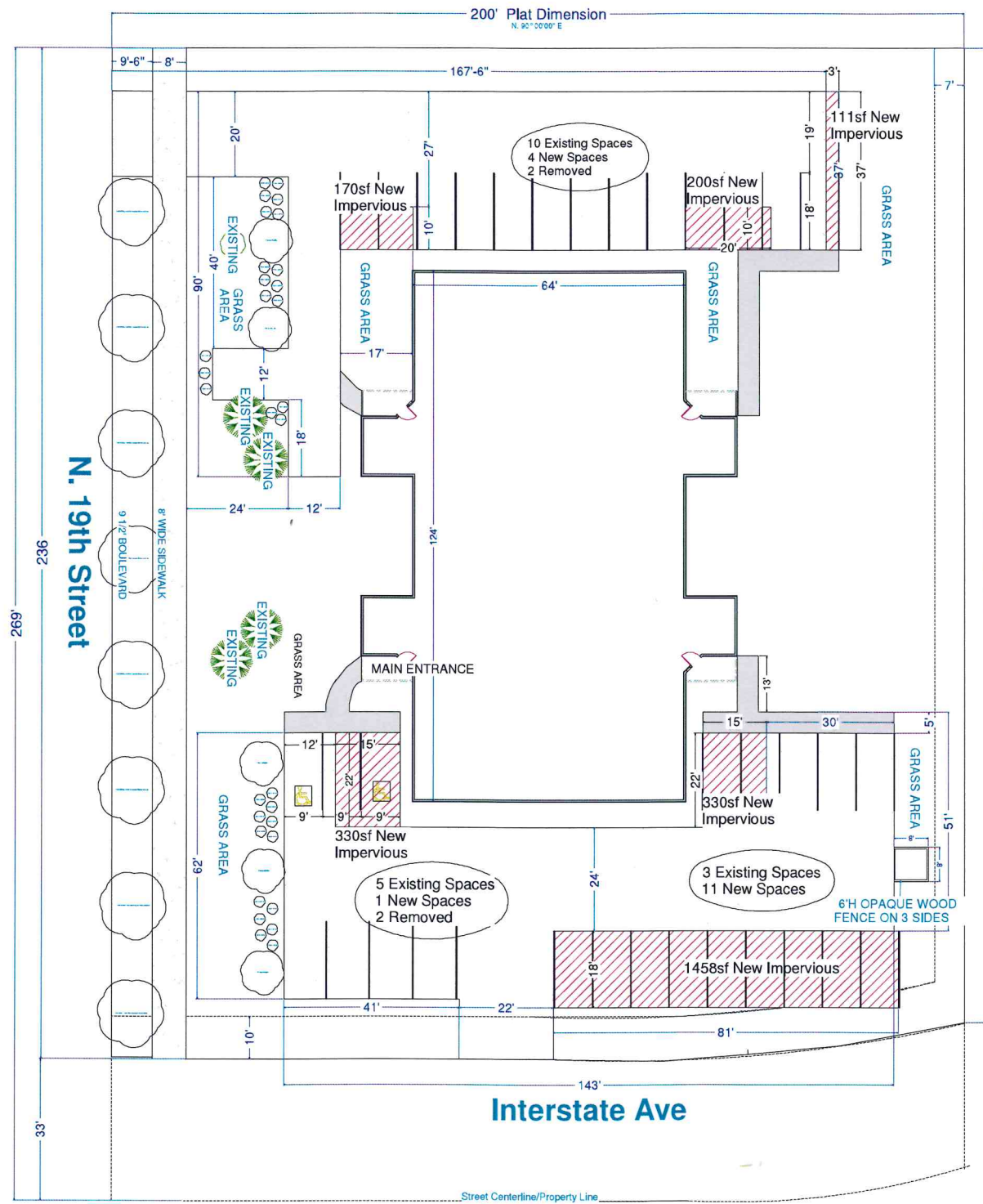


APPROVED BY PLANNING

*Janet Walchuk*  
Planner 4-7-16  
TITLE DATE

APPROVED BY FORESTRY

*M. Smith*  
LANDSCAPE ARCHITECT 4-7-16  
TITLE DATE



**SITE INFORMATION:**  
 B.1, L.1, Kensington 1st  
 Section 27, T.139 N., R. 80 W.  
 Acreage= 47,512 SF (per plat)  
 Zoned RT  
 Remodel Interior of Existing Building  
 Add Parking Spaces for RT zoning  
 Drainage to Stay same as existing  
 (Storm Water Waiver requested)  
 Landscaping added per City  
 Bldg Total S.F. = 8600 SF  
 Occupancy= 1 space per 250 SF  
 = 34.4 Spaces Needed

**LANDSCAPING NOTES:**  
 Street Frontage:  
 N.19th St.Frontage= 236-25-20 Approaches= 191 LF x  
 3 trees/100 LF  
 =6 Boulevard Trees added  
 No Approaches subtracted = 8 Boulevard Trees  
 Screening Trees & Plants:  
 20/100 between N.19th & Parking Areas  
 (65LF+ 40 LF + 18LF) x 20/100 LF=  
 5 Ornamental Trees added  
 28 Shrubs added  
 3 Existing Trees

- LEGEND:**
- Linden Hybrid (*Tilia x flavescens*)  
Size: 1-1/2" Caliper QTY:8
  - Japanese Tree Lilac (*Syringa reticulata*)  
Size: 1-1/2" Caliper QTY: 5
  - Arctic Fire Dogwood (*Cornus sericea*)  
Size: 2 gallon container QTY: 28
  - EXISTING Existing Spruce Trees
  - EXISTING Existing Crabapple Tree



Landscape Plan  
 Scale: 1" = 30'-0"

NO.	DESCRIPTION	BY	DATE

SHEET TITLE:  
 Landscape Plan

PROJECT DESCRIPTION:  
 Red Door Pediatric Therapy  
 2625 N. 19th Str, Bismarck

DRAWINGS PROVIDED BY:  
  
 Tobias Marman Construction LLC  
 Bismarck, ND 58501 701-527-1847

DATE:  
 4/5/2016

SCALE:  
 SEE NOTES

SHEET:  
 A-13