

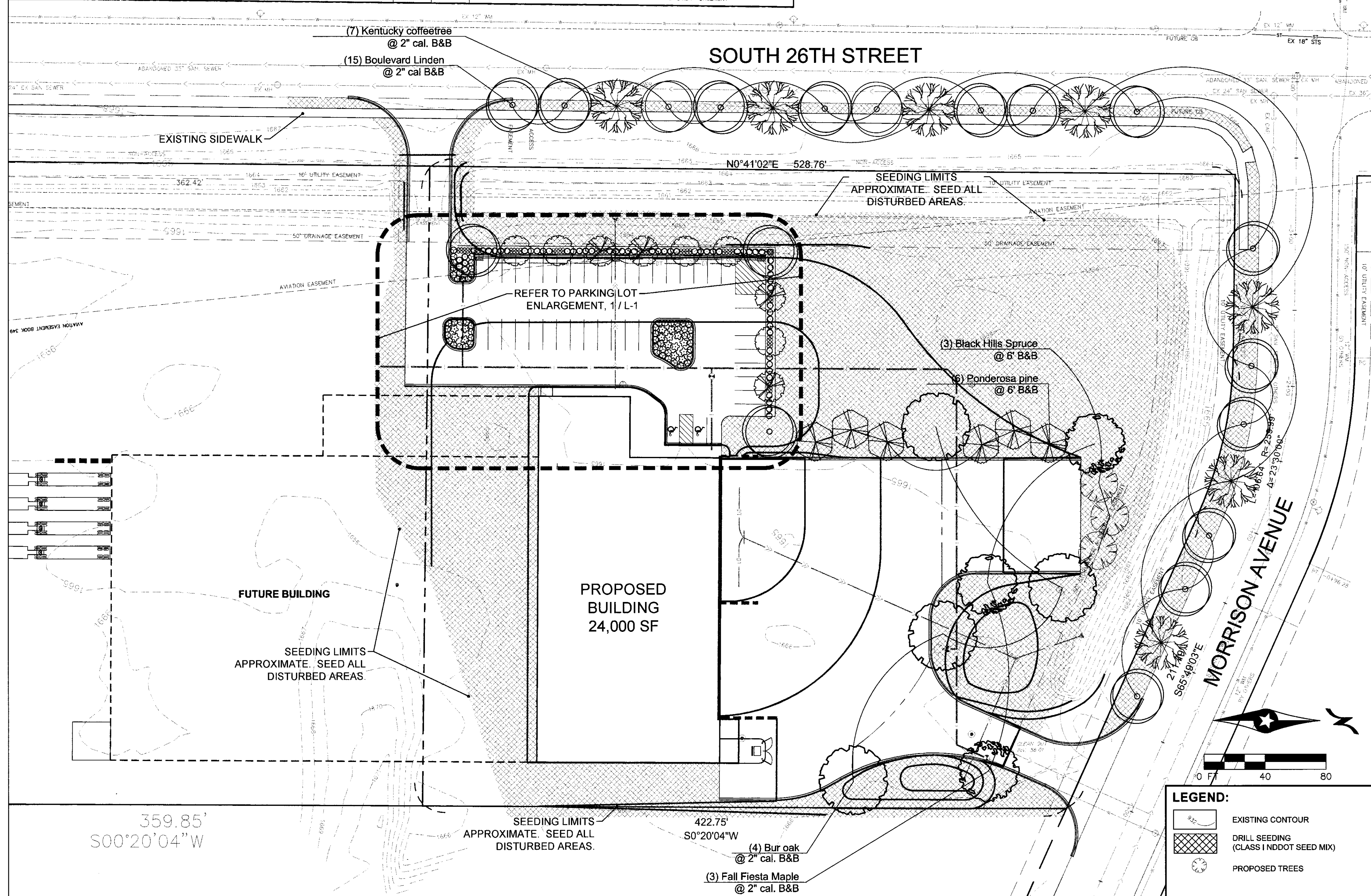
1 PARKING LOT ENLARGEMENT
SCALE: 1"=10'

PLANTING SCHEDULE:

Broadleaf Deciduous					
Quantity	Symbol	Scientific Name	Common Name	Code Name	Planting Size
3	○	Acer saccharum 'Bailest'	Fall Fiesta Maple	AcsaB	2" cal. B&B
4	○	Amelanchier x grandiflora 'Autumn Brilliance'	Autumn Brilliance Serviceberry (Multi-Stem)	Amgab	12-14' B&B
8	○	Gymnocladus dioica	Kentucky coffeetree	Gydi	2" cal. B&B
4	○	Quercus macrocarpa	Bur oak	Quma	2" cal. B&B
5	○	Syringa reticulata 'Summer Snow'	Japanese Tree Lilac	SyreSS	1-1/2" cal B&B
19	○	Tilia americana 'Boulevard'	Boulevard Linden	TamB	1" cal B&B
Conifer Evergreen					
Quantity	Symbol	Scientific Name	Common Name	Code Name	Planting Size
4	○	Picea glauca densata	Black Hills Spruce	Pigid	8' B&B
6	○	Pinus ponderosa	Ponderosa pine	Pipo	8' B&B
Perennial					
Quantity	Symbol	Scientific Name	Common Name	Code Name	Planting Size
94	○	Calamagrostis x acutiflora 'Karl Foerster'	Feather Reed Grass	CaacKF	1-gal Potted
Shrub					
Quantity	Symbol	Scientific Name	Common Name	Code Name	Planting Size
15	○	Diervilla lonicera	Dwarf Bush Honeysuckle	Dilo	5-gal Potted
53	○	Microbiota decussata	Russian Cypress	Mede	5-gal Potted
24	○	Physocarpus opulifolius 'Little Devil'	Little Devil Ninebark	PhopLD	5-gal Potted
36	○	Syringa meyeri 'Palibin'	Dwarf Korean Lilac	SmDK	5-gal Potted

GENERAL LANDSCAPE NOTES:

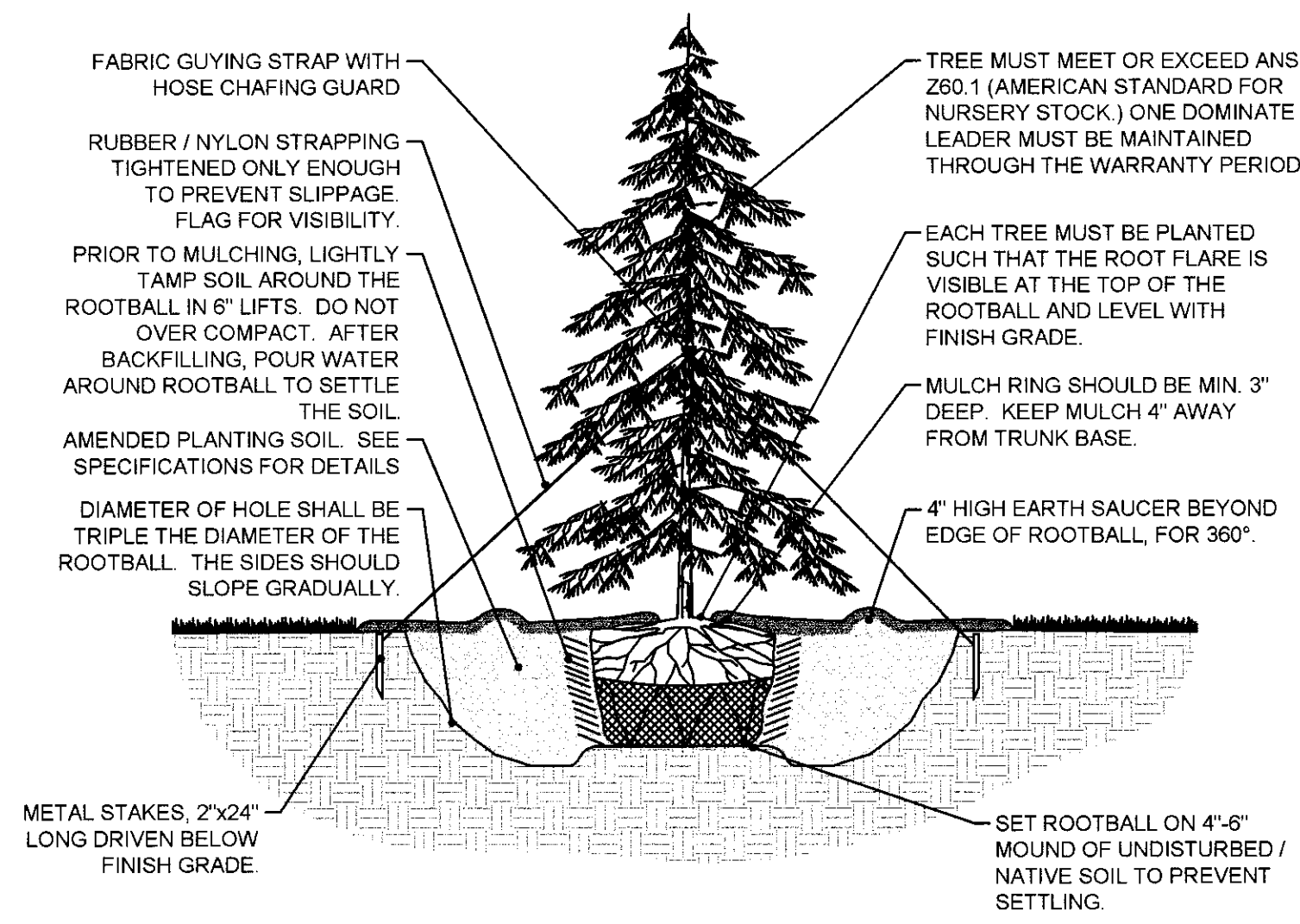
- LANDSCAPE CONTRACTOR SHALL VISIT SITE PRIOR TO SUBMITTING BID TO BECOME COMPLETELY FAMILIAR WITH SITE CONDITIONS.
- ALL ROUGH AND FINISH GRADING TO BE DONE BY OTHERS.
- NO PLANTING WILL BE INSTALLED UNTIL ALL GRADING AND CONSTRUCTION HAS BEEN COMPLETED IN IMMEDIATE AREA.
- IT IS THE RESPONSIBILITY OF THE OWNER & CONTRACTOR TO IDENTIFY ALL UNDERGROUND CABLES, CONDUITS, WIRES, ETC., ON THE PROPERTY.
- IF THERE IS A DISCREPANCY BETWEEN THE NUMBER OF PLANTS SHOWN ON THE PLAN AND THE NUMBER OF PLANTS SHOWN IN THE PLANT LIST, THE NUMBER OF PLANTS SHOWN ON THE PLAN WILL TAKE PRECEDENCE.
- IF THE CONTRACTOR BELIEVES AN ERROR HAS BEEN MADE REGARDING SPACING OR HARDINESS OF A SPECIES OF PLANT MATERIAL INDICATED ON THE PLAN, NOTIFY THE LANDSCAPE ARCHITECT PRIOR TO THE INSTALLATION OF PLANT MATERIAL.
- THE CONTRACTOR IS RESPONSIBLE FOR THE PLANTS MEETING THE SPECIFICATIONS AS NOTED PRIOR TO THEIR INSTALLATION. THE CONTRACTOR MUST IMMEDIATELY REMOVE ANY PLANT THAT DOES NOT MEET THE SPECIFICATIONS.
- THE CONTRACTOR IS RESPONSIBLE FOR COMPLETELY MAINTAINING THE PLANTING AREAS (INCLUDING WATERING, SPRAYING, FERTILIZING, MOWING, ETC.) THROUGH THE END OF THE PERIOD ESTABLISHED BY THE ENGINEER AND LANDSCAPE ARCHITECT FOR THE PROJECT AND UNTIL THE WORK HAS BEEN ACCEPTED.
- ALL MATERIAL SHALL COMPLY WITH THE LATEST EDITION OF THE AMERICAN STANDARD FOR NURSERY STOCK, AMERICAN ASSOCIATION OF NURSERYMEN.
- REPAIR ALL DAMAGE TO PROPERTY FROM PLANTING OPERATIONS AT NO COST TO THE OWNER.
- GUARANTEE NEW PLANT MATERIAL THROUGH ONE CALENDAR YEAR FOR DECIDUOUS TREES UP TO 3-1/2" CAL & CONIFERS UP TO 11' HT. (LARGER SIZES WILL BE GUARANTEED FOR TWO CALENDAR YEARS FROM TIME OF PROVISIONAL ACCEPTANCE).
- ALL PLANTS MUST BE PROTECTED DURING THEIR TRANSPORT AND TAKEN TO THE SITE COVERED WITH A CLOTH FOR SHADE OR OTHER PREVENTIVE FORM TO PROTECT THE PLANTS AGAINST WIND BURN.
- ALL PROPOSED PLANTS SHALL BE LOCATED CAREFULLY AS SHOWN ON THE PLANS AND SHALL BE APPROVED BY LANDSCAPE ARCHITECT BEFORE THEY ARE INSTALLED.
- CONTRACTOR CAN SUBSTITUTE MACHINE MOVED MATERIAL USING APPROPRIATE SIZE TREE SPADE FOR B & B WITH RESIDENT ENGINEER AND LANDSCAPE ARCHITECTS APPROVAL.
- LANDSCAPE CONTRACTOR SHALL ENSURE THAT NEW TREES MOVED ONTO THE SITE ARE DUG FROM SIMILAR SITES WITH SIMILAR SOILS TO THE SOILS OF THIS PROJECT (HEAVY TO HEAVY, LIGHT TO LIGHT, HEAVY TO LIGHT SOILS).
- THE PRACTICE OF STAKING SHOULD NOT ALLOW NAILS, SCREWS, WIRES, ETC. TO PENETRATE THE OUTER SURFACE OF THE TREES. THE TREES THAT ARE REJECTED DUE TO THIS PRACTICE SHOULD BE REPLACED IN THE PRESENCE OF AN INSPECTOR.
- THE CONTRACTOR WILL BE RESPONSIBLE FOR THE REMOVAL OF ALL TREE STAKES, GUYS, STRAPS AND TRUCK PROTECTION MEASURES FOLLOWING THE COMPLETION OF THE WARRANTEE PERIOD OR AS DIRECTED BY THE LANDSCAPE ARCHITECT AND/OR OWNER'S REPRESENTATIVE.
- LANDSCAPE CONTRACTOR IS REQUIRED TO PROVIDE OWNER WITH MAINTENANCE INFORMATION DURING GUARANTEE PERIOD RELATING TO WATERING, FEEDING, PRUNING, PEST CONTROL, AND RELATED ITEMS. THIS WILL BE PREPARED AND DELIVERED TO OWNER AFTER PROVISIONAL INSPECTION APPROVAL HAS BEEN GIVEN BY RESIDENT ENGINEER AND LANDSCAPE ARCHITECT.
- WRAPPING MATERIAL SHALL BE CORRUGATED TREE PROTECTION WITH THE SIZE OF TUBE 1" DIA. (MIN.) LARGER THAN THE CALIPER INCH SIZE OF TREE TO BE PROTECTED. WRAP ALL TREES, EXCEPT HACKBERRY TREE SHALL BE PROTECTED PRIOR TO 12/1 AND TUBES REMOVED BY 5/1.
- METAL EDGER UNLESS SPECIFIED OTHERWISE.
- LANDSCAPE BED MULCH SHALL BE SHREDDED HARDWOOD MULCH. MULCH SHALL BE INSTALLED AT A TYPICAL DEPTH OF 3" WITH WEED BARRIER LANDSCAPE FABRIC.
- 3" DEEP WOOD MULCH WILL BE INSTALLED UNDER ALL TREES AND SHRUBS THAT ARE ISOLATED FROM GROUND COVER AREAS AND GENERAL SHRUB MASSES.
- ALL PLANTING SHALL RECEIVE FERTILIZER AS FOLLOWS:
SUMMER AND FALL PLANTING - BEFORE WINTER FREEZE-UP APPLY 0-20-20 GRANULAR IN SAUCER AROUND PLANT AT THE RATE OF 1-1/2 OZ. CAN PER 2-3" CAL. TREE & 1-8 OZ. CAN FULL PER SHRUB. FOLLOW UP WITH THE SAME AMOUNT OF 10-10-10 THE FOLLOWING SPRING.
- CALIPER OF ALL TREE TRUNKS UP TO AND INCLUDING 4" SHALL BE MEASURED 6" ABOVE GROUND LEVEL AND 12" ABOVE GROUND LEVEL FOR LARGER SIZES.
- ALL CONTAINER MATERIAL TO BE GROWN IN CONTAINER A MINIMUM OF 6 MONTHS.
- SHRUBS AND GROUND COVER TO BE PLANTED A MINIMUM OF ONE HALF THEIR ON-CENTER SPACING FROM PAVING EDGE UNLESS OTHERWISE NOTED.
- ALL NEWLY INSTALLED PLANT MATERIAL SHALL BE PLANTED IN WELL-DRAINED AREAS. CONTRACTOR SHALL AVOID INSTALLING ANY PLANT MATERIAL IN DRAINAGE SWALES OR WET & POORLY DRAINED AREAS.



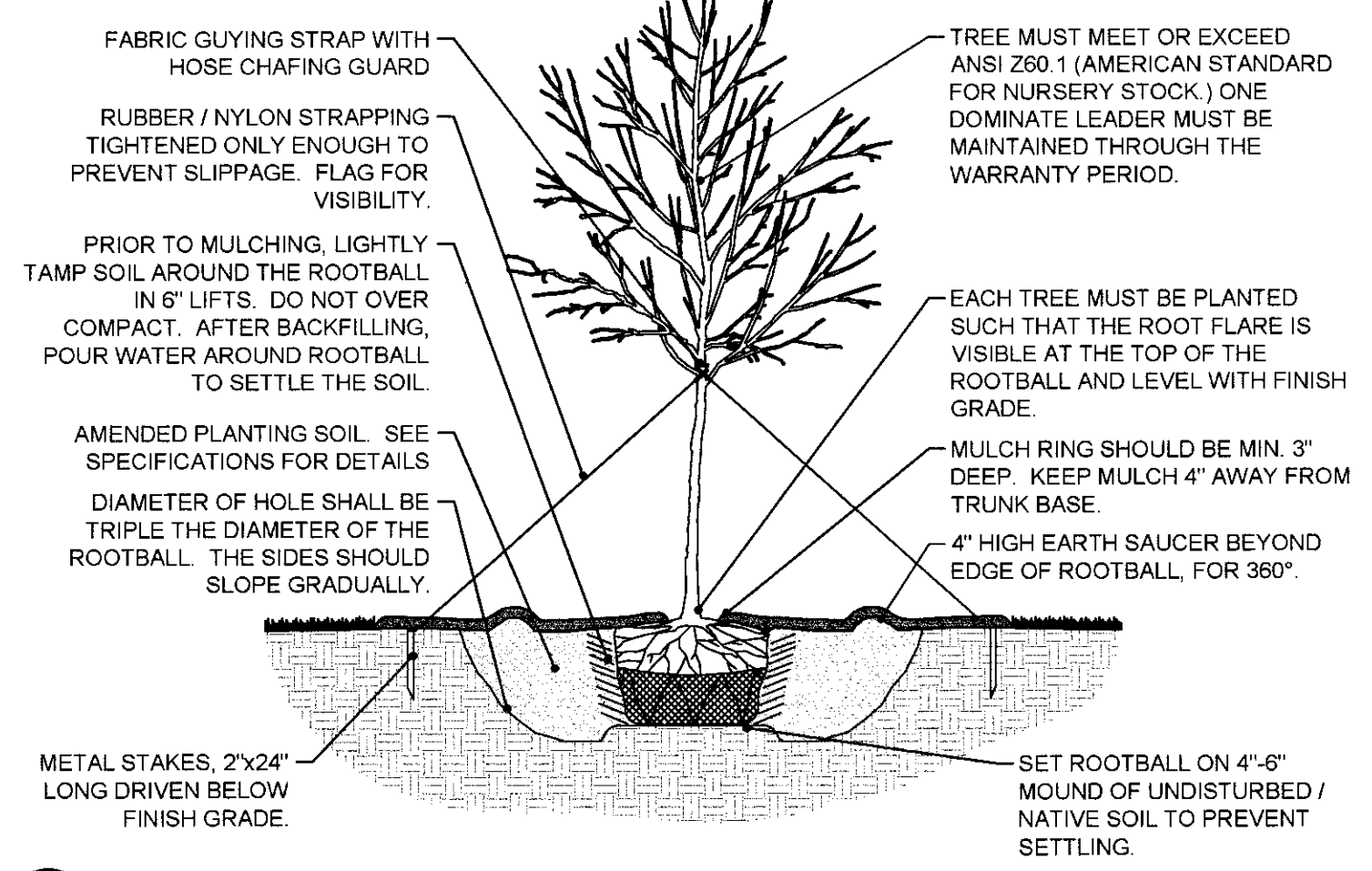
2 LANDSCAPE PLAN
SCALE: 1"=10'

APPROVED BY PLANNING
PLAN NUMBER: 01-22-15
DATE: 01-22-15

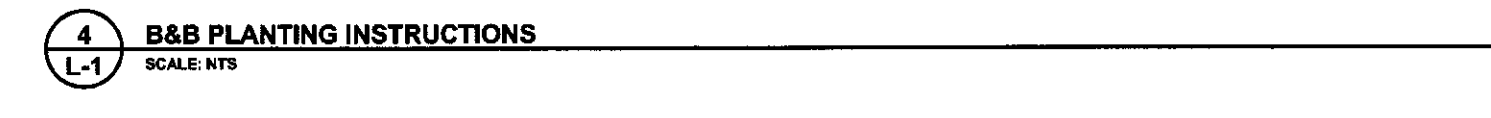
APPROVED BY FORESTRY
DATE: 1-22-15



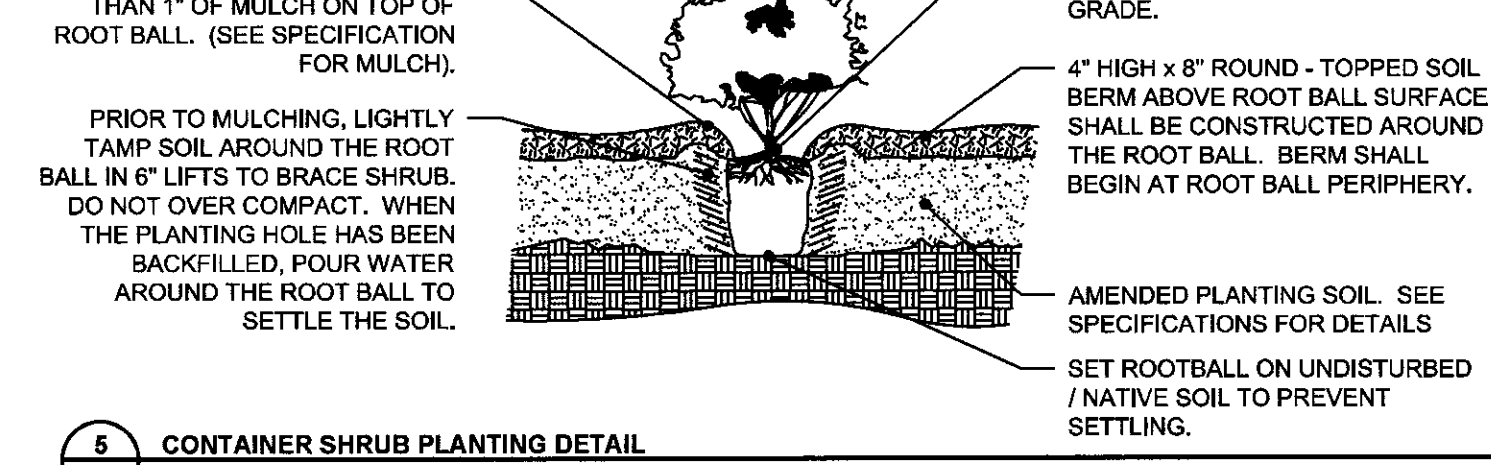
3 CONIFEROUS TREE PLANTING DETAIL
SCALE: 1/2"=1'



4 DECIDUOUS TREE PLANTING DETAIL
SCALE: 1/2"=1'



4 B&B PLANTING INSTRUCTIONS
SCALE: 1/2"=1'



5 CONTAINER SHRUB PLANTING DETAIL
SCALE: 1/2"=1'

LEGEND:

- EXISTING CONTOUR
- DRILL SEEDING (CLASS 1 NDOT SEED MIX)
- PROPOSED TREES