

BISMARCK LANDSCAPE ORDINANCE NOTES

STREET TREE SPACING IS 33' ON CENTER WITH 25' SIGHT TRIANGLES AT INTERSECTIONS. A 40' SIGHT TRIANGLE IS PROVIDED AT THE INTERSECTION OF CALGARY AVENUE AND HAMILTON STREET.

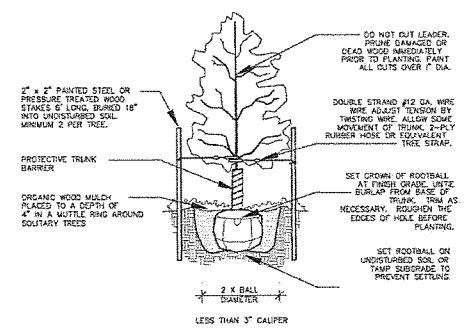
PARKING LOTS ARE CONNECTED WITH AN INTERIOR TRAFFIC CIRCULATION ROUTE. AS SUCH, INDIVIDUAL LOTS ARE CONSIDERED AS ONE CONTIGUOUS PARKING LOT.

TOTAL PARKING STALLS: 75

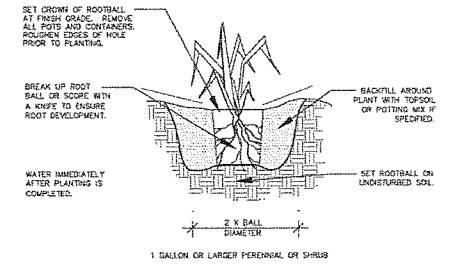
INTERIOR LANDSCAPING TREES & SHRUBS: 8 TREES AND 36 SHRUBS

INTERIOR LANDSCAPING ISLAND SQUARE FOOTAGE: 1410 S.F.

LANDSCAPE BUFFERYARD: NONE

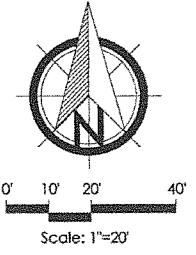


TREE PLANTING DETAIL NTS
TYPICAL FOR ALL DECIDUOUS, SINGLE-TRUNK, TREES

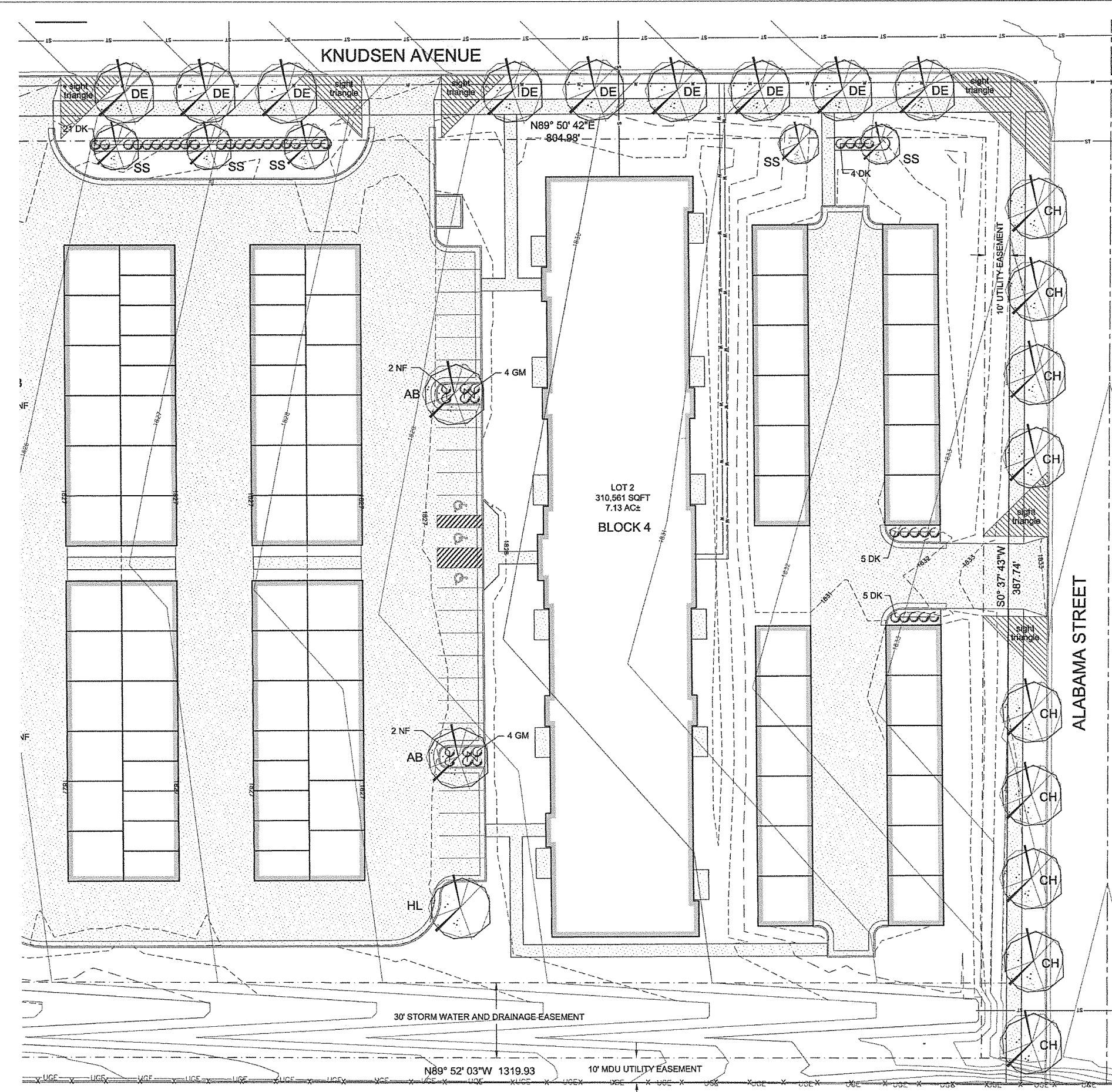


SHRUB/PERENNIAL PLANTING DETAIL NTS
TYPICAL FOR ALL SHRUBS AND PERENNIALS

I hereby certify that this plan specification, or report was prepared by me or under my direct supervision, and that I am a duly Registered Landscape Architect under the laws of the State of North Dakota.
JACOB L. AXTMAN, ASLA
Date 09-24-13 Ref. No. 35



01077 - 120
01077 - 2010



GENERAL LANDSCAPING NOTES FOR ALL SHEETS

- (L1) REFER TO CONSULTANT SHEETS FOR UNDERGROUND UTILITIES. CONTRACTOR SHALL BE RESPONSIBLE FOR LOCATING UTILITIES BEFORE DIGGING.
- (L2) ALL CONTRACTORS SUBMITTING BIDS FOR THIS PROJECT SHALL FIELD VERIFY ALL CONDITIONS ON SITE. ANY DISCREPANCIES BETWEEN PLANS AND SITE CONDITIONS SHALL BE CLARIFIED WITH THE LANDSCAPE ARCHITECT BEFORE CONSTRUCTION BEGINS.
- (L3) PROTECT THE IMPROVEMENTS ON SITE AND ON THE ADJOINING PROPERTIES. PROVIDE BARRICADES, COVERINGS OR OTHER TYPE OF PROTECTION AS NECESSARY TO PREVENT DAMAGE AND TO SAFEGUARD AGAINST INJURIES. DAMAGE THAT OCCURS TO PLANTS DURING TRANSPORTATION AND INSTALLATION WILL BE THE RESPONSIBILITY OF THE LANDSCAPE CONTRACTOR.
- (L4) UNLESS OTHERWISE DEPICTED, ALL PLANTING BEDS SHALL BE INSTALLED WITH 3" OF +2" WASHED RIVER ROCK MULCH, LANDSCAPE FABRIC WITH A MINIMUM WEIGHT OF 4 OZ./SY., AND WHEREVER NECESSARY, 6" COMMERCIAL GRADE BLACK PLASTIC EDGING TO CONTAIN THE PLANTING BED.
- (L5) LANDSCAPE CONTRACTOR SHALL BE RESPONSIBLE TO CARE FOR ALL PLANT MATERIAL, SEED, AND OTHER LANDSCAPING IMPROVEMENTS UNTIL THE DATE OF FINAL INSPECTION AND APPROVAL. IT IS IN THE BEST INTEREST OF THE LANDSCAPE CONTRACTOR TO ENSURE ALL PLANTS ARE PROPERLY WATERED AND CARED FOR DURING THIS TIME. DEAD OR DYING PLANT MATERIAL WILL NOT BE ACCEPTED.
- (L6) SOLITARY TREES DO NOT NEED TO BE EDGED AROUND, HOWEVER ORGANIC WOOD MULCH SHALL BE PLACED AROUND THE TREE IN A MUTLE RING THAT CONFORMS TO THE DETAIL PROVIDED FOR TREE PLANTINGS.
- (L7) CONTRACTOR SHALL PROVIDE WRITTEN WARRANTIES CONFIRMING THE FOLLOWING:
- (L8) FURNISHED TREES AND SHRUBS GUARANTEED TO LIVE AND REMAIN STRONG, VIGOROUS, AND HEALTHY CONDITION FOR 365 DAYS MINIMUM FROM DATE LANDSCAPE INSTALLATION IS ACCEPTED AS COMPLETED.

PLANT PALETTE

SYM.	COMMON NAME	SCIENTIFIC NAME	SIZE	QNTY.
AB	AUTUMN BLAZE MAPLE	<i>Acer x freemanii 'Jeffred'</i>	1 1/2" Cal.	6
CH	COMMON HACKBERRY	<i>Celtis occidentalis</i>	1 1/2" Cal.	9
DE	DISCOVERY ELM	<i>Ulmus davidiana var. Japonica 'Discovery'</i>	1 1/2" Cal.	19
HL	NORTHERN ACCLAIM HONEYLOCUST	<i>Gleditsia triacanthos 'Harve'</i>	1 1/2" Cal.	2
SS	SPRING SNOW CRABAPPLE	<i>Malus 'Spring Snow'</i>	1" Cal.	7
DK	DWARF KOREAN LILAC	<i>Syringa meyeri 'Polbin'</i>	2 Gallon	43
KF	KARL FOERSTER	<i>Calamagrostis x acutiflora</i>	1 Gallon	67
MC	MAGIC CARPET SPIREA	<i>Spiraea japonica 'Watbuma'</i>	2 Gallon	24
NF	NEON FLASH SPIREA	<i>Spiraea japonica 'Neon Flash'</i>	2 Gallon	12

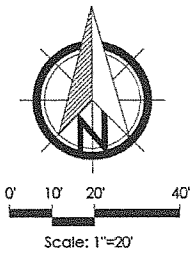
APPROVED BY FORESTRY

Break
 Forestry Program Spec. 10/11/13
 TITLE DATE

APPROVED BY PLANNING

Ann Land
 PLANNER 10-1-13
 TITLE DATE

I hereby certify that this plan specification, or report was prepared by me or under my direct supervision, and that I am a duly Registered Landscape Architect under the laws of the State of North Dakota.
 JACOB L. AXTMAN, ASLA
 Date: 09-24-13 Ref. No. 25



northridge hospitality management
legacy apartments
 bismarck, north dakota

east landscaping plan

SHEET
L2.0