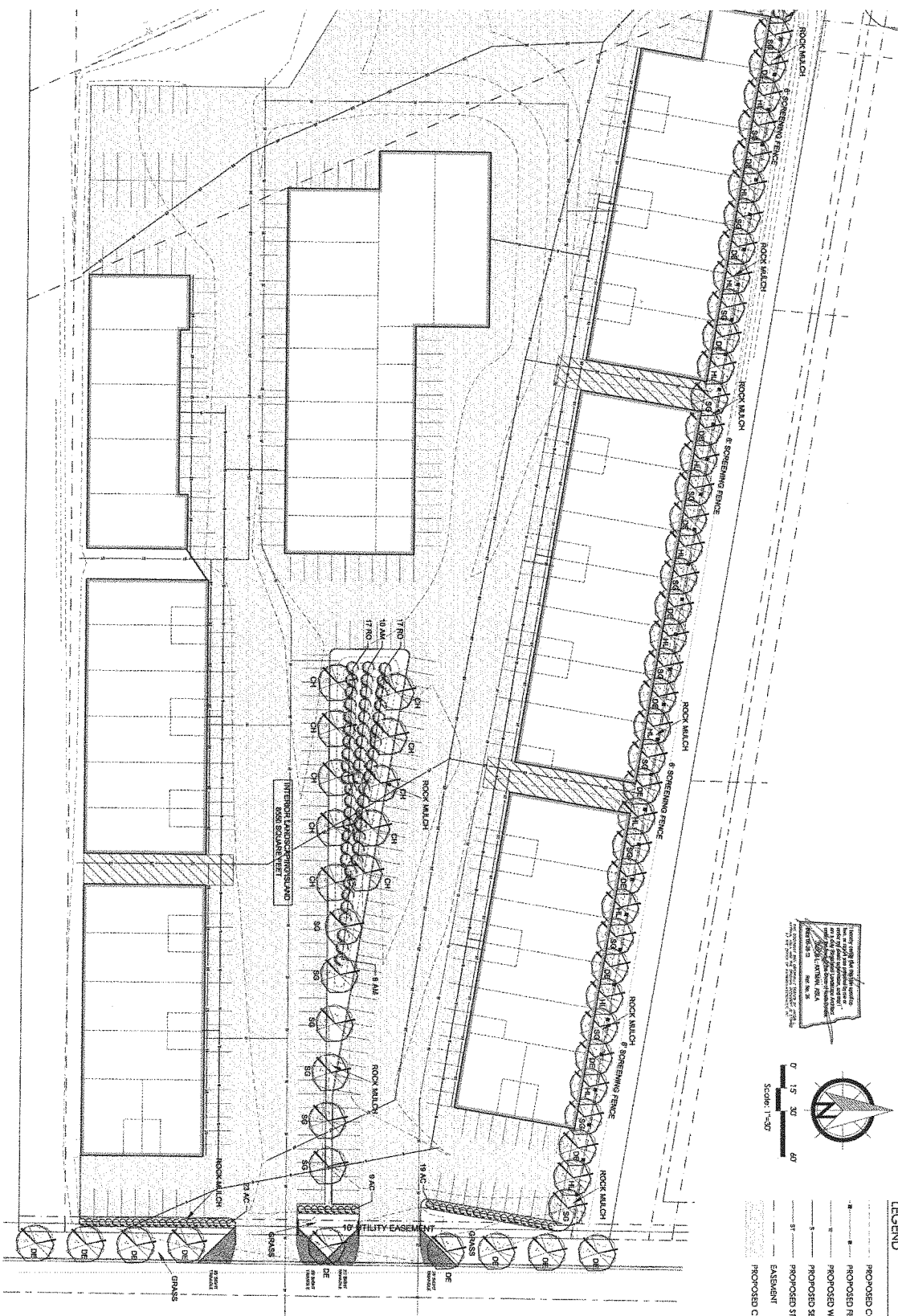


APPROVED BY FORESTRY

APPROVED BY PLANNING

G. J. Anderson
DATE 7-5-13

Michael J. Paller
DATE 07.05.13



Having reviewed the site plan and the information provided, I hereby certify that the information is true and correct to the best of my knowledge and belief.

DATE: 7/5/13

BY: G. J. Anderson



0 15 30 45
Scale: 1"=30'

LEGEND

	PROPOSED CONTOUR
	PROPOSED FENCE
	PROPOSED WATER
	PROPOSED SEWER
	PROPOSED STORM SEWER
	EASEMENT
	PROPOSED CONCRETE

Copyright © 2013 by Axtman+Associates, P.C. All rights reserved. No part of this drawing may be used or reproduced in any form or by any means without the express written permission of Axtman+Associates, P.C.

SHEET
L1.0

east landscaping plan

edgewood development group
edgewood shop condos
bismarck, north dakota



axtman+associates
landscape architecture | planning
p.o. box 2164 | bismarck, nd | 58502
www.axtmanassociates.com

JUL - 2 2013

