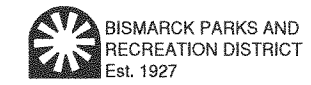


**Municipal Field
Renovation & Site Layout**



400 East Front Avenue
Bismarck, ND 58504

Revision	Date	Description	By

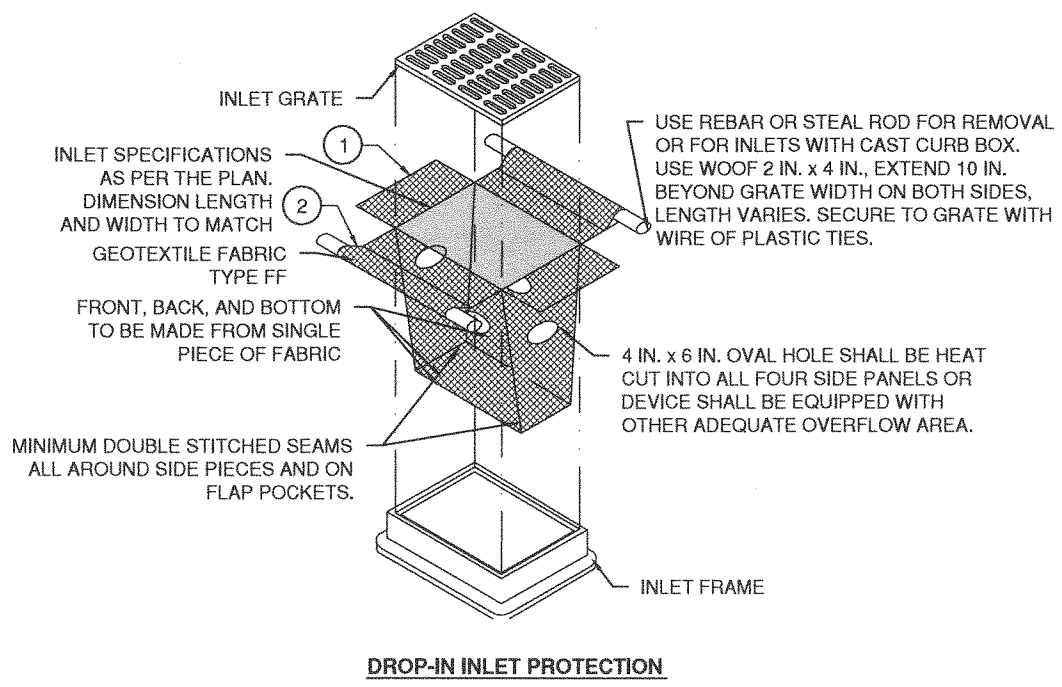
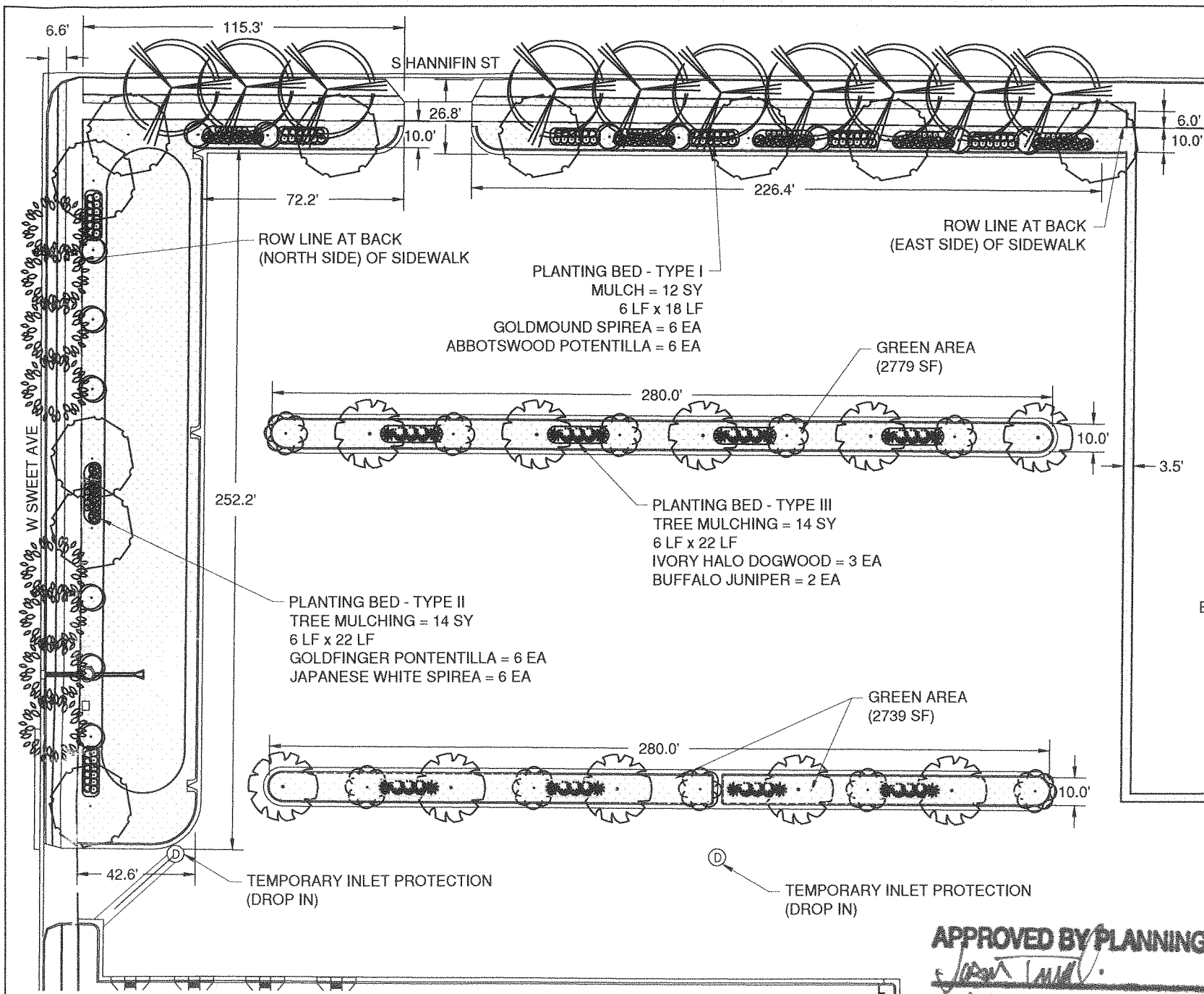
LEGEND

- SEEDING CLASS II
- EXISTING TREE
- EXISTING AREA DRAIN
- EXISTING LIGHT STANDARD

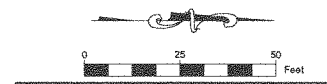
PARKING INFORMATION:

320 TOTAL PARKING SPACES
8 ADA SPACES
312 STANDARD SPACES

FOR COMPLETE PARKING INFORMATION,
SEE SHEETS 11 & 12 IN SIGNING AND
STRIPING.



- NOTES:**
- FINISHED SIZE, INCLUDING FLAP POCKETS WHERE REQUIRED, SHALL EXTEND A MINIMUM OF 10 IN. AROUND THE PERIMETER TO FACILITATE MAINTENANCE OR REMOVAL.
 - FLAP POCKETS SHALL BE LARGE ENOUGH TO ACCEPT WOOD 2 IN. x 4 IN.
 - DO NOT INSTALL INLET PROTECTION IN INLETS SHALLOWER THAN 30 IN., MEASURED FROM THE BOTTOM OF THE INLET TO THE TOP OF THE GRATE.
 - TRIM EXCESS FABRIC IN THE FLOW LINE TO WITHIN 3 IN. OF THE GRATE.
 - THE INSTALLED BAG SHALL HAVE A MINIMUM SIDE CLEARANCE, BETWEEN THE INLET WALL AND THE BAG, MEASURED AT THE BOTTOM OF THE OVERFLOW HOLES, OF 3 IN. WHERE NECESSARY THE CONTRACTOR SHALL CINCH THE BAG, USING PLASTIC ZIP TIES, TO ACHIEVE THE 3 IN. CLEARANCE. THE TIES SHALL BE PLACED AT A MAXIMUM OF 4 IN. FROM THE BOTTOM OF THE BAG.



THIS DOCUMENT WAS ORIGINALLY
ISSUED AND SEALED BY
ALEXIS J. WALLEVAND
REGISTRATION NUMBER
LA-3
ON 08/29/2013 AND THE ORIGINAL
DOCUMENT IS STORED AT
ULTEIG ENGINEERS

APPROVED BY PLANNING
[Signature]
PLANNER 09-05-13
DATE

APPROVED BY FORESTRY
[Signature]
CITY FORESTER 9-5-13
DATE

SUMMARY OF PROPOSED LANDSCAPING QUANTITIES

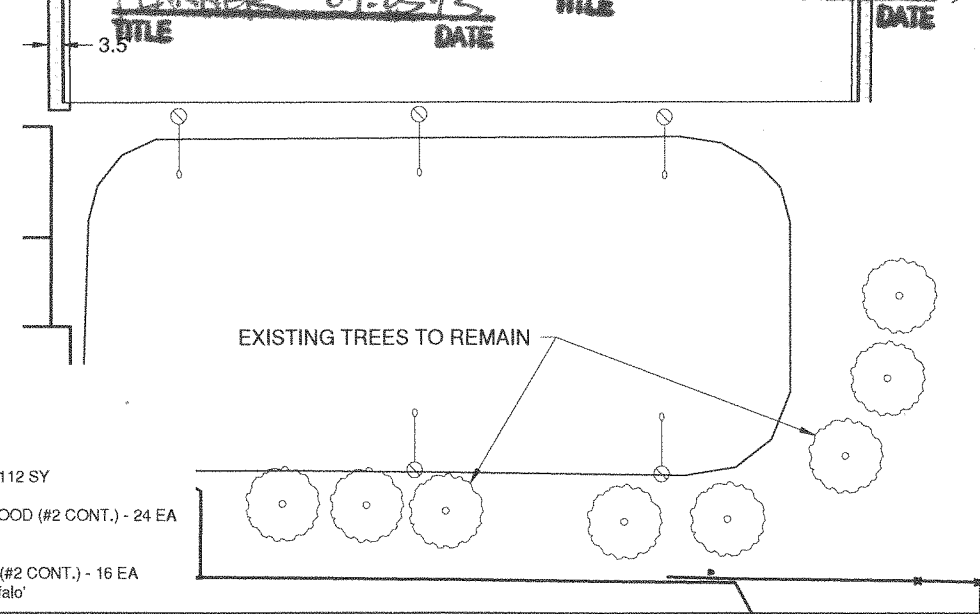
NOT TO BE PAID FOR SEPARATELY
ALL ITEMS TO BE INCLUDED
IN LUMP-SUM BID ITEM "LANDSCAPING"

TREES SUMMARY

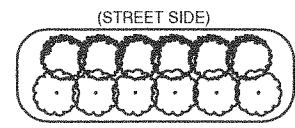
- AMUR MAPLE (1" CAL.) - 10 EA
Acer ginnala
- SNOWBIRD HAWTHORN (1" CAL.) - 13 EA
Crataegus x mordenensis 'Snowbird'
- HARVEST GOLD LINDEN (1.5" CAL.) - 8 EA
Tilia x mongolica 'Harvest Gold'
- NORTHERN ACCLAIM HONEYLOCUST (1.5" CAL.) - 10 EA
Gleditsia triacanthos var. inermis 'Harve'
- JAPANESE TREE LILAC (1" CAL.) - 10 EA
Syringa reticulata
- DISCOVERY ELM (1.5" CAL.) - 10 EA
Ulmus davidiana var. japonica 'Discovery'

PLANTING BED AREA SUMMARY

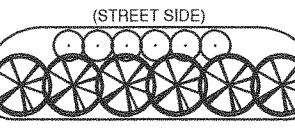
PLANTING BED - TYPE I - 7 EA	PLANTING BED - TYPE II - 6 EA	PLANTING BED - TYPE III - 8 EA
TREE MULCHING AREAS: 84 SY	TREE MULCHING AREAS: 84 SY	TREE MULCHING AREAS: 112 SY
GOLDMOUND SPIREA (#2 CONT.) - 42 EA Spiraea 'Goldmound'	GOLDFINGER POTENTILLA (#2 CONT.) - 36 EA Potentilla fruticosa 'Goldfinger'	IVORY HALO DOGWOOD (#2 CONT.) - 24 EA Cornus alba 'Bailhalo'
ABBOTSWOOD POTENTILLA (#2 CONT.) - 42 EA Potentilla fruticosa 'Abbotswood'	JAPANESE WHITE SPIREA (#2 CONT.) - 36 EA Spiraea albiflora	BUFFALO JUNIPER (#2 CONT.) - 16 EA Juniperus sabina 'Buffalo'



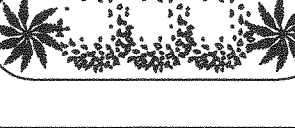
PLANTING BED - TYPE I



PLANTING BED - TYPE II



PLANTING BED - TYPE III



1412 Basin Avenue
Bismarck, North Dakota 58504
Phone: 701.258.6507 Fax: 701.224.1163
Web: www.ulteig.com

Drawn By: BZ
Checked By: CK
Approved By: CK

**MUNICIPAL FIELD
LANDSCAPING & TEMPORARY
EROSION CONTROL**

Project Number: 13.00916
Date: August 29, 2013
Sheets: 9 of 12