

BISMARCK LANDSCAPE ORDINANCE NOTES

STREET TREE SPACING IS 35' ON CENTER WITH 25' SIGHT TRIANGLES AT INTERSECTIONS.

PARKING LOTS ARE CONNECTED WITH AN INTERIOR TRAFFIC CIRCULATION ROUTE. AS SUCH, INDIVIDUAL LOTS ARE CONSIDERED AS ONE CONTIGUOUS PARKING LOT.

TOTAL PARKING STALLS: 176

INTERIOR LANDSCAPING TREES & SHRUBS: 9 TREES AND 27 SHRUBS (SHRUBS SUBSTITUTED FOR 9 TREES)

INTERIOR LANDSCAPING ISLAND SQUARE FOOTAGE: 9541 S.F.

PERIMETER LANDSCAPING VARIES DUE TO THE VARYING WIDTH OF GREENSPACE. ALL GREENSPACE WITH 40' OR MORE OF SEPARATION FROM THE LOT LINE ARE DESIGNED WITH 4 TREES PER 100 LINEAR FEET. ALL PERIMETER GREENSPACES WITH 40' OR LESS OF SEPARATION FROM THE LOT LINE ARE DESIGNED WITH 2 SHADE TREES AND 15 SHRUBS PER 100 LINEAR FEET.

PLANT PALETTE

SYM.	COMMON NAME	SCIENTIFIC NAME	SIZE	QNTY.
AB	AUTUMN BLAZE MAPLE	<i>Acer x freemanii 'Jeffersred'</i>	1 1/2' Cal.	16
AL	AMERICAN LINDEN	<i>Tilia americana</i>	1 1/2' Cal.	17
DE	DISCOVERY ELM	<i>Ulmus davidiana var. japonica 'Discovery'</i>	1 1/2' Cal.	15
HL	HONEY LOCUST	<i>Gleditsia triacanthos</i>	1 1/2' Cal.	20
SG	SIENNA GLEN MAPLE	<i>Acer Freemanii 'Sienna'</i>	1 1/2' Cal.	16
SS	SPRING SNOW CRABAPPLE	<i>Malus Spring Snow'</i>	1 1/2' Cal.	16
AC	AMERICAN CRANBERRY BUSH	<i>Viburnum trilobum 'Bailey's Compact'</i>	2 Gallon	34
DK	DWARF KOREAN ULAC	<i>Syringa meyeri 'Palbin'</i>	2 Gallon	63
EU	DWARF BURNING BUSH	<i>Euonymus alata 'Compactus'</i>	2 Gallon	9
KF	KARL FOERSTER GRASS	<i>Calamagrostis x acutiflora</i>	1 Gallon	19
MN	MAY NIGHT SALVIA	<i>Salvia nemorosa 'Mairacht'</i>	1 Gallon	19

THE QUANTITIES PROVIDED IN THIS TABLE ARE FOR CONVENIENCE ONLY. IF DISCREPANCIES EXIST BETWEEN THE PLAN AND THIS TABLE, THE PLAN QUANTITIES SHALL BE CONSIDERED CORRECT. PLEASE NOTIFY LANDSCAPE ARCHITECT IF DISCREPANCIES EXIST.

GENERAL LANDSCAPING NOTES FOR ALL SHEETS

REFER TO CONSULTANT SHEETS FOR UNDERGROUND UTILITIES. CONTRACTOR SHALL BE RESPONSIBLE FOR LOCATING UTILITIES BEFORE DIGGING.

ALL CONTRACTORS SUBMITTING BIDS FOR THIS PROJECT SHALL FIELD VERIFY ALL CONDITIONS ON SITE. ANY DISCREPANCIES BETWEEN PLANS AND SITE CONDITIONS SHALL BE CLARIFIED WITH THE LANDSCAPE ARCHITECT BEFORE CONSTRUCTION BEGINS.

PROTECT THE IMPROVEMENTS ON SITE AND ON THE ADJOINING PROPERTIES. PROVIDE BARRICADES, COVERINGS OR OTHER TYPE OF PROTECTION AS NECESSARY TO PREVENT DAMAGE AND TO SAFEGUARD AGAINST INJURY TO EXISTING UTILITIES. DAMAGE THAT OCCURS TO PLANTS DURING TRANSPORTATION AND INSTALLATION WILL BE THE RESPONSIBILITY OF THE LANDSCAPE CONTRACTOR.

UNLESS OTHERWISE SPECIFIED, ALL PLANTING BEDS SHALL BE INSTALLED WITH 3" OF 1/2" WASHED RIVER ROCK MULCH, LANDSCAPE FABRIC WITH A MINIMUM WEIGHT OF 4 OZ./SY, AND WHEREVER NECESSARY, 6" COMMERCIAL GRADE BLACK PLASTIC EDGING TO CONTAIN THE PLANTING BED.

THE PLANTER BOX NEAR THE FRONT ENTRANCE TO THE BUILDING SHALL BE INSTALLED WITH LANDSCAPE FABRIC MATCHING THE PREVIOUSLY PROVIDED PERFORMANCE SPEC. 4" OF SHREDDED, ORGANIC, HARDWOOD MULCH SHALL BE INSTALLED ON TOP OF THE FABRIC INSIDE OF THE PLANTER BOX.

LANDSCAPE CONTRACTOR SHALL BE RESPONSIBLE TO CARE FOR ALL PLANT MATERIAL, SEED, AND OTHER LANDSCAPING IMPROVEMENTS UNTIL THE DATE OF FINAL INSPECTION AND APPROVAL. IT IS IN THE BEST INTEREST OF THE LANDSCAPE CONTRACTOR TO ENSURE ALL PLANTS ARE PROPERLY WATERED AND CARED FOR DURING THIS TIME. DEAD OR DYING PLANT MATERIAL WILL NOT BE ACCEPTED.

SOLITARY TREES DO NOT NEED TO BE EDGED AROUND, HOWEVER ORGANIC WOOD MULCH SHALL BE PLACED AROUND THE TREE IN A MULTIPLE RING THAT CORRESPONDS TO THE DETAIL PROVIDED FOR TREE PLANTINGS.

CONTRACTOR SHALL PROVIDE WRITTEN WARRANTIES CONFIRMING THE FOLLOWING:

FURNISHED TREES AND SHRUBS GUARANTEED TO LIVE AND REMAIN STRONG, VIGOROUS, AND HEALTHY CONDITION FOR 365 DAYS MINIMUM FROM DATE LANDSCAPE INSTALLATION IS ACCEPTED AS COMPLETED.

REFER TO THE PLAN FOR SEEDING & SODDING. BOTH SEED AND SOD ARE TO BE USED ON THIS SITE. SOD AND SEED SHALL NOT BE INSTALLED UNTIL THE IRRIGATION SYSTEM IS FULLY OPERATIONAL. LANDSCAPE CONTRACTOR SHALL BE RESPONSIBLE FOR CARING FOR SEED AND SOD UNTIL THE DATE OF FINAL ACCEPTANCE. IT WILL BE THE RESPONSIBILITY OF THE LANDSCAPE CONTRACTOR TO COORDINATE WITH FACILITIES STAFF ON THE NECESSARY IRRIGATION ZONE RUN TIMES TO KEEP THE SEED AND SOD HEALTHY DURING THE ESTABLISHMENT PERIOD.

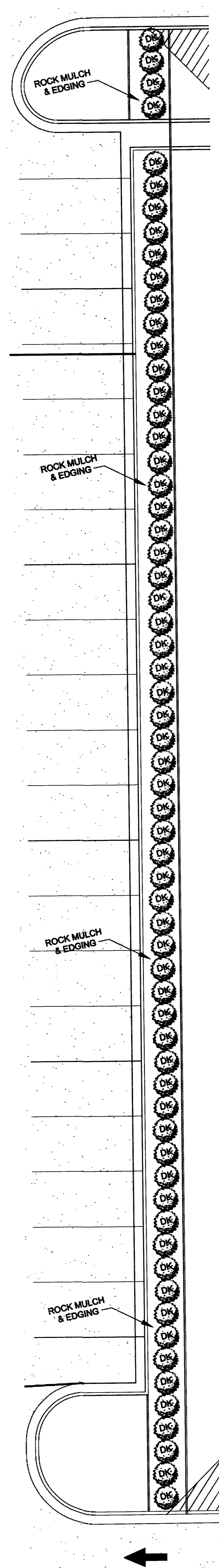
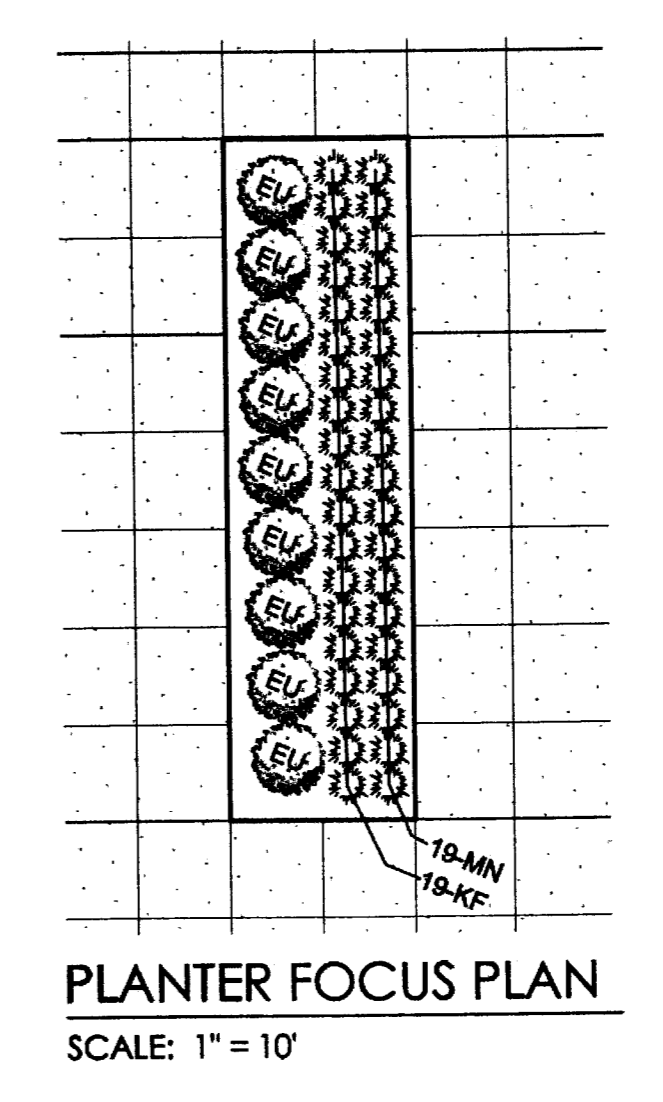
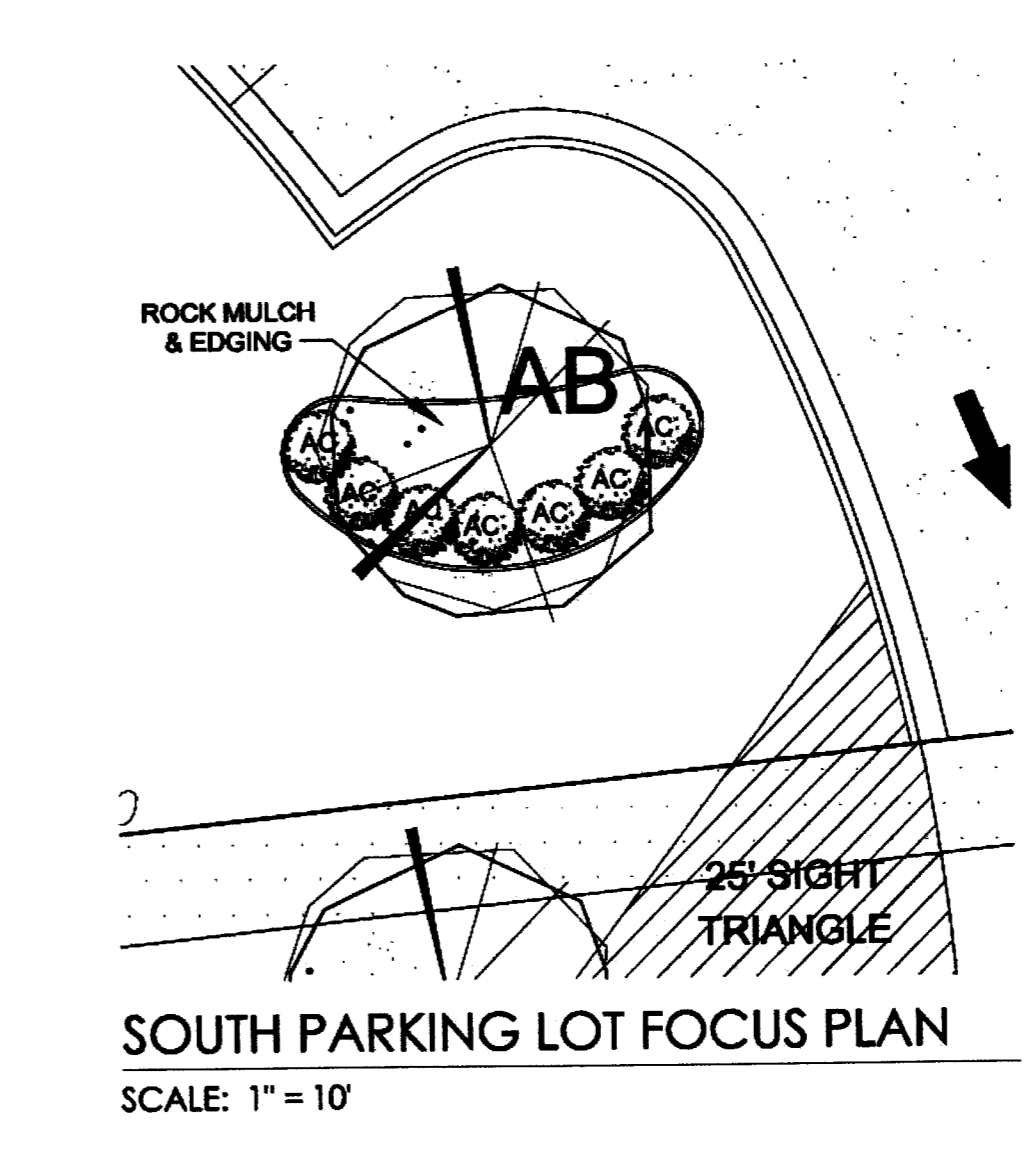
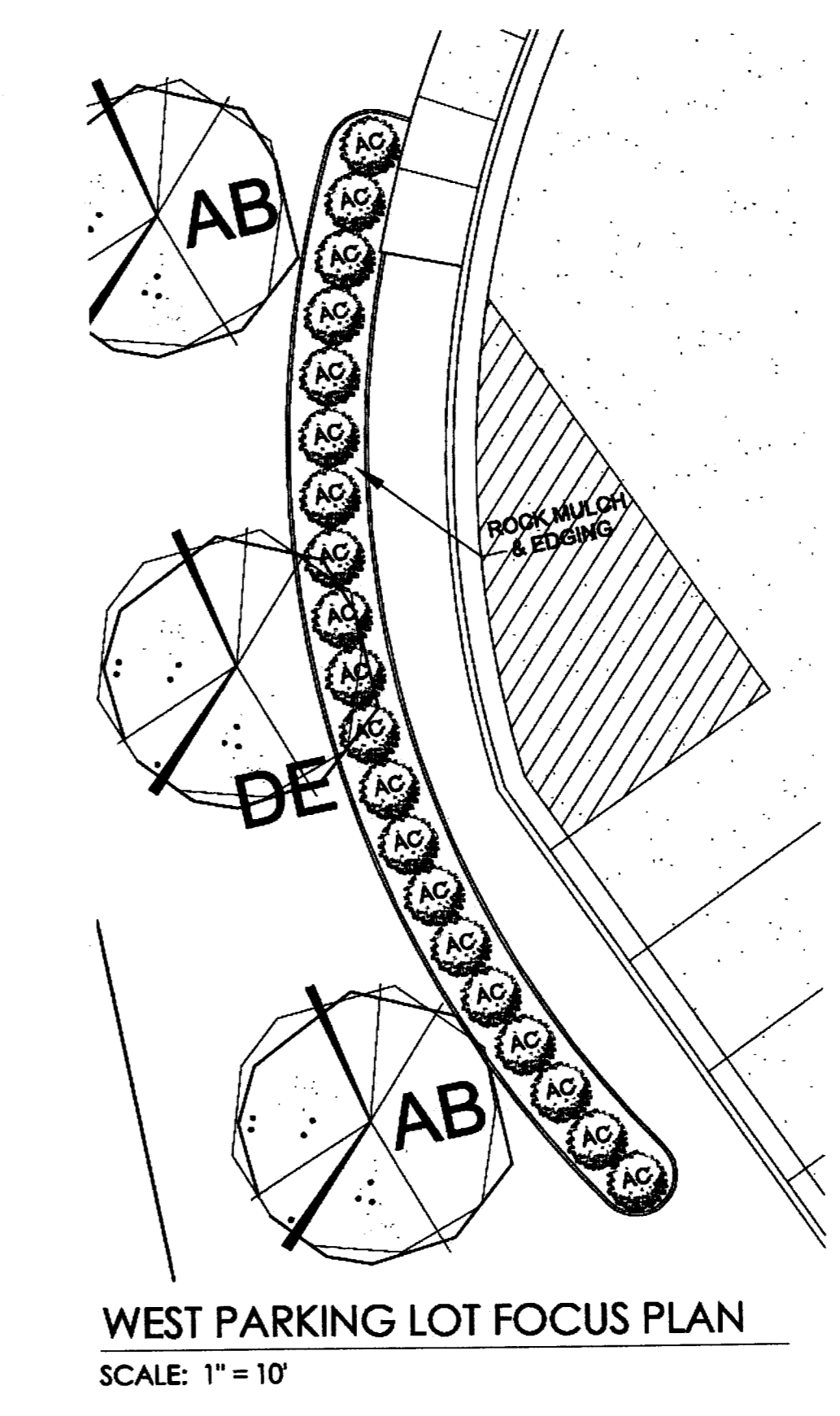
WHERE DEPICTED ON THE PLAN, SITE SHALL BE SODDED. SOD SHALL CONFORM TO THE MOST RECENT VERSION OF THE CITY OF BISMARCK'S CONSTRUCTION SPECIFICATIONS FOR MUNICIPAL PUBLIC WORKS IMPROVEMENTS FOR SODDING. THIS SECTION CAN BE FOUND AS SECTION 1203 - SODDING AND IS AVAILABLE ON THE CITY OF BISMARCK'S WEBSITE: WWW.BISMARCK.ORG.

ANY OTHER PORTIONS OF THE SITE NOT RECEIVING SOD OR OTHER IMPROVEMENTS SHALL BE SEEDDED ACCORDING TO THE MOST RECENT VERSION OF THE CITY OF BISMARCK'S CONSTRUCTION SPECIFICATIONS FOR MUNICIPAL PUBLIC WORKS IMPROVEMENTS FOR SEEDING. THE SEED VARIETY TO BE USED SHALL BE CLASS II. THIS SECTION CAN BE FOUND AS SECTION 1202 - SEEDING AND IS AVAILABLE ON THE CITY OF BISMARCK'S WEBSITE: WWW.BISMARCK.ORG.

ALL SEEDING AREAS SHALL BE HYDROMULCHED. HYDROMULCH SHALL CONFORM TO THE MOST RECENT VERSION OF THE CITY OF BISMARCK'S CONSTRUCTION SPECIFICATIONS FOR MUNICIPAL PUBLIC WORKS IMPROVEMENTS FOR MULCHING. ONLY THOSE SECTIONS APPLICABLE TO HYDROMULCH SHALL BE USED. THIS SECTION CAN BE FOUND AS SECTION 1204 - MULCHING AND IS AVAILABLE ON THE CITY OF BISMARCK'S WEBSITE: WWW.BISMARCK.ORG.

APPROVED BY PLANNING
Jacob L. Axman
TITLE: PLANNER 05-02-13
DATE:

APPROVED BY FORESTRY
Jacob L. Axman
TITLE: CITY PLANNER 5-2-17
DATE:



I hereby certify that this plan specification, or report was prepared by me or under my direct supervision, and that I am a duly Registered Landscape Architect under the laws of the State of North Dakota.

JACOB L. AXMAN, A.S.A.
Date: 04-26-13 Ref. No. 35

THIS DOCUMENT WAS ORIGINALLY SIGNED BY JACOB L. AXMAN, A.S.A. AND IS BEING REPRODUCED BY THE OFFICE OF LAND RESOURCES, INC.